

Product datasheet for **TA314494**

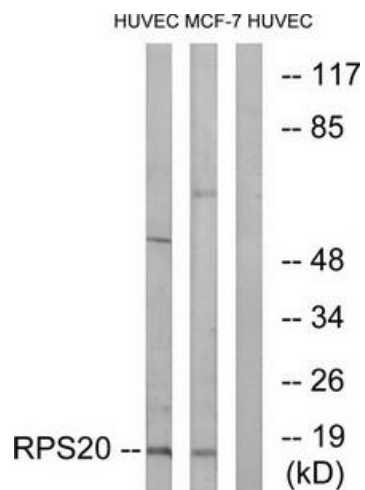
RPS20 Rabbit Polyclonal Antibody

Product data:

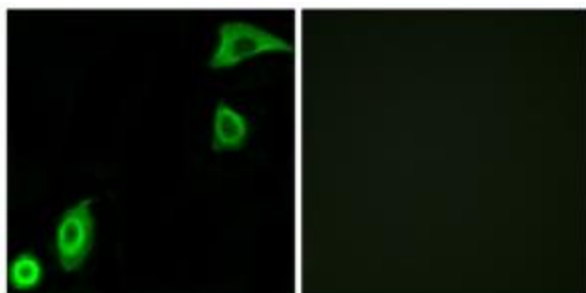
Product Type:	Primary Antibodies
Applications:	IF, WB
Recommended Dilution:	WB: 1:500~1:3000, IF: 1:100~1:500, ELISA: 1:40000
Reactivity:	Human, Mouse, Rat
Host:	Rabbit
Isotype:	IgG
Clonality:	Polyclonal
Immunogen:	The antiserum was produced against synthesized peptide derived from internal of human RPS20.
Formulation:	Phosphate buffered saline (without Mg ²⁺ and Ca ²⁺), pH 7.4, 150mM NaCl, 0.02% sodium azide and 50% glycerol.
Concentration:	lot specific
Purification:	The antibody was affinity-purified from rabbit antiserum by affinity-chromatography using epitope-specific immunogen.
Conjugation:	Unconjugated
Storage:	Store at -20°C as received.
Stability:	Stable for 12 months from date of receipt.
Gene Name:	ribosomal protein S20
Database Link:	NP_001014 Entrez Gene 67427 Mouse Entrez Gene 122772 Rat Entrez Gene 6224 Human P60866
Synonyms:	S20
Note:	RPS20 antibody detects endogenous levels of total RPS20 protein.
Protein Pathways:	Ribosome



[View online »](#)

Product images:

Western blot analysis of extracts from HUVEC cells and MCF-7 cells, using RPS20 antibody. The lane on the right is treated with the synthesized peptide.



Immunofluorescence analysis of A549 cells, using RPS20 antibody. The picture on the right is treated with the synthesized peptide.