

Product datasheet for **TA314488**

Ribosomal protein S11 (RPS11) Rabbit Polyclonal Antibody

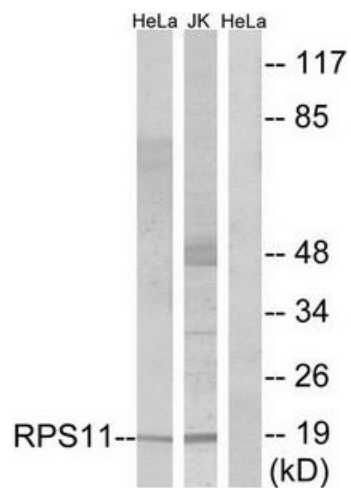
Product data:

Product Type:	Primary Antibodies
Applications:	WB
Recommended Dilution:	WB: 1:500~1:3000, ELISA: 1:5000
Reactivity:	Human, Mouse, Rat
Host:	Rabbit
Isotype:	IgG
Clonality:	Polyclonal
Immunogen:	The antiserum was produced against synthesized peptide derived from internal of human RPS11.
Formulation:	Phosphate buffered saline (without Mg ²⁺ and Ca ²⁺), pH 7.4, 150mM NaCl, 0.02% sodium azide and 50% glycerol.
Concentration:	lot specific
Purification:	The antibody was affinity-purified from rabbit antiserum by affinity-chromatography using epitope-specific immunogen.
Conjugation:	Unconjugated
Storage:	Store at -20°C as received.
Stability:	Stable for 12 months from date of receipt.
Gene Name:	ribosomal protein S11
Database Link:	NP_001006 Entrez Gene 27207 Mouse Entrez Gene 81774 Rat Entrez Gene 6205 Human P62280
Synonyms:	S11
Note:	RPS11 antibody detects endogenous levels of total RPS11 protein.
Protein Pathways:	Ribosome



[View online »](#)

Product images:



Western blot analysis of extracts from HeLa cells and Jurkat cells, using RPS11 antibody. The lane on the right is treated with the synthesized peptide.