

Product datasheet for **TA314477**

RPS4Y1 Rabbit Polyclonal Antibody

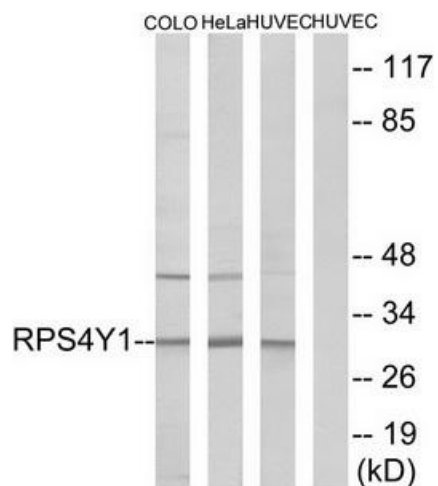
Product data:

Product Type:	Primary Antibodies
Applications:	IF, WB
Recommended Dilution:	WB: 1:500~1:3000, IF: 1:100~1:500, ELISA: 1:20000
Reactivity:	Human
Host:	Rabbit
Isotype:	IgG
Clonality:	Polyclonal
Immunogen:	The antiserum was produced against synthesized peptide derived from C-terminal of human RPS4Y1.
Formulation:	Phosphate buffered saline (without Mg ²⁺ and Ca ²⁺), pH 7.4, 150mM NaCl, 0.02% sodium azide and 50% glycerol.
Concentration:	lot specific
Purification:	The antibody was affinity-purified from rabbit antiserum by affinity-chromatography using epitope-specific immunogen.
Conjugation:	Unconjugated
Storage:	Store at -20°C as received.
Stability:	Stable for 12 months from date of receipt.
Gene Name:	ribosomal protein S4, Y-linked 1
Database Link:	NP_000999 Entrez Gene 6192 Human P22090
Synonyms:	RPS4Y; S4
Note:	RPS4Y1 antibody detects endogenous levels of total RPS4Y1 protein.
Protein Pathways:	Ribosome

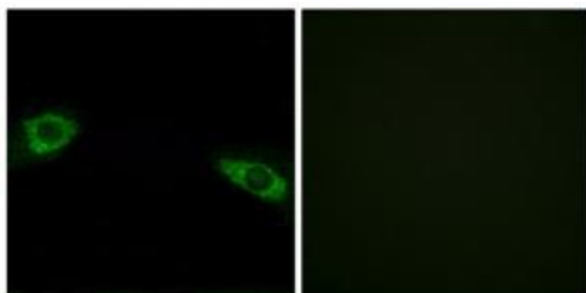


[View online »](#)

Product images:



Western blot analysis of extracts from COLO cells, HeLa cells and HUVEC cells, using RPS4Y1 antibody. The lane on the right is treated with the synthesized peptide.



Immunofluorescence analysis of HuvEc cells, using RPS4Y1 antibody. The picture on the right is treated with the synthesized peptide.