

## Product datasheet for **TA314476**

### RPS4X Rabbit Polyclonal Antibody

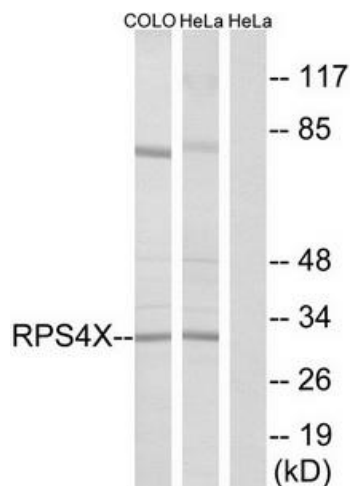
#### Product data:

|                       |   |
|-----------------------|---|
| Product Type:         | Primary Antibodies  |
| Applications:         | IF, WB  |
| Recommended Dilution: | WB: 1:500~1:3000, IF: 1:100~1:500, ELISA: 1:40000   |
| Reactivity:           | Human, Mouse, Rat   |
| Host:                 | Rabbit  |
| Isotype:              | IgG   |
| Clonality:            | Polyclonal  |
| Immunogen:            | The antiserum was produced against synthesized peptide derived from internal of human RPS4X.  |
| Formulation:          | Phosphate buffered saline (without Mg <sup>2+</sup> and Ca <sup>2+</sup> ), pH 7.4, 150mM NaCl, 0.02% sodium azide and 50% glycerol.  |
| Concentration:        | lot specific  |
| Purification:         | The antibody was affinity-purified from rabbit antiserum by affinity-chromatography using epitope-specific immunogen.   |
| Conjugation:          | Unconjugated  |
| Storage:              | Store at -20°C as received.   |
| Stability:            | Stable for 12 months from date of receipt.  |
| Gene Name:            | ribosomal protein S4, X-linked  |
| Database Link:        | <a href="#">NP_000998</a><br><a href="#">Entrez Gene 20102 Mouse</a> <a href="#">Entrez Gene 100362640 Rat</a> <a href="#">Entrez Gene 6191 Human</a><br><a href="#">P62701</a> |
| Synonyms:             | CCG2; DXS306; RPS4; S4; SCAR; SCR10   |
| Note:                 | RPS4X antibody detects endogenous levels of total RPS4X protein.  |
| Protein Pathways:     | Ribosome  |

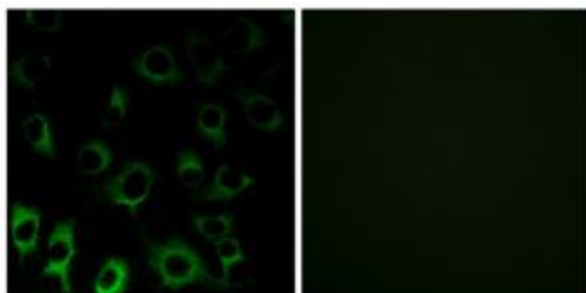


[View online »](#)

## Product images:



Western blot analysis of extracts from COLO cells and HeLa cells, using RPS4X antibody. The lane on the right is treated with the synthesized peptide.



Immunofluorescence analysis of HUVEC cells, using RPS4X antibody. The picture on the right is treated with the synthesized peptide.