

## Product datasheet for **TA314472**

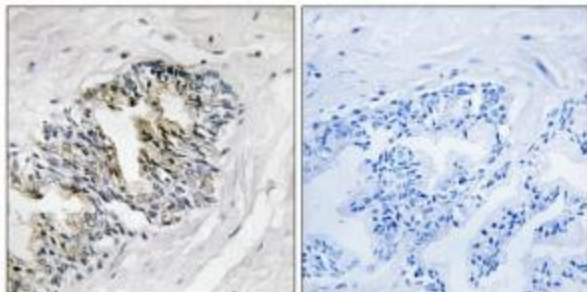
### RPLP2 Rabbit Polyclonal Antibody

#### Product data:

Product Type:	Primary Antibodies
Applications:	IHC
Recommended Dilution:	IHC: 1:50~1:100, ELISA: 1:40000
Reactivity:	Human, Mouse, Rat
Host:	Rabbit
Isotype:	IgG
Clonality:	Polyclonal
Immunogen:	The antiserum was produced against synthesized peptide derived from internal of human RPLP2.
Formulation:	Phosphate buffered saline (without Mg <sup>2+</sup> and Ca <sup>2+</sup> ), pH 7.4, 150mM NaCl, 0.02% sodium azide and 50% glycerol.
Concentration:	lot specific
Purification:	The antibody was affinity-purified from rabbit antiserum by affinity-chromatography using epitope-specific immunogen.
Conjugation:	Unconjugated
Storage:	Store at -20°C as received.
Stability:	Stable for 12 months from date of receipt.
Gene Name:	ribosomal protein lateral stalk subunit P2
Database Link:	<a href="#">NP_000995</a> <a href="#">Entrez Gene 67186 Mouse</a> <a href="#">Entrez Gene 140662 Rat</a> <a href="#">Entrez Gene 6181 Human</a> <a href="#">P05387</a>
Synonyms:	D11S2243E; LP2; P2; RPP2
Note:	RPLP2 antibody detects endogenous levels of total RPLP2 protein.
Protein Families:	Druggable Genome
Protein Pathways:	Ribosome



[View online »](#)

**Product images:**

Immunohistochemistry analysis of paraffin-embedded human prostate carcinoma tissue using RPLP2 antibody. The picture on the right is treated with the synthesized peptide.