

## Product datasheet for **TA314471**

### RPL39 Rabbit Polyclonal Antibody

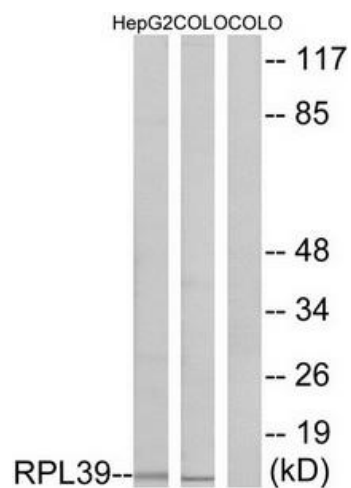
#### Product data:

Product Type:	Primary Antibodies
Applications:	WB
Recommended Dilution:	WB: 1:500~1:3000, IF: 1:100~1:500, ELISA: 1:60000
Reactivity:	Human, Mouse, Rat
Host:	Rabbit
Isotype:	IgG
Clonality:	Polyclonal
Immunogen:	The antiserum was produced against synthesized peptide derived from internal of human RPL39.
Formulation:	Phosphate buffered saline (without Mg <sup>2+</sup> and Ca <sup>2+</sup> ), pH 7.4, 150mM NaCl, 0.02% sodium azide and 50% glycerol.
Concentration:	lot specific
Purification:	The antibody was affinity-purified from rabbit antiserum by affinity-chromatography using epitope-specific immunogen.
Conjugation:	Unconjugated
Storage:	Store at -20°C as received.
Stability:	Stable for 12 months from date of receipt.
Gene Name:	ribosomal protein L39
Database Link:	<a href="#">NP_000991</a> <a href="#">Entrez Gene 25347 Rat</a> <a href="#">Entrez Gene 67248 Mouse</a> <a href="#">Entrez Gene 6170 Human</a> <a href="#">P62891</a>
Synonyms:	L39; RPL39P42; RPL39_23_1806
Note:	RPL39 antibody detects endogenous levels of total RPL39 protein.
Protein Pathways:	Ribosome



[View online »](#)

## Product images:



Western blot analysis of extracts from HepG2 cells and COLO cells, using RPL39 antibody. The lane on the right is treated with the synthesized peptide.