

## Product datasheet for **TA314469**

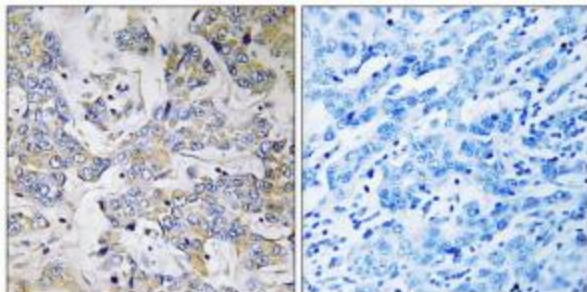
### RPL37 Rabbit Polyclonal Antibody

#### Product data:

Product Type:	Primary Antibodies
Applications:	IHC
Recommended Dilution:	IHC: 1:50~1:100, ELISA: 1:10000
Reactivity:	Human, Mouse, Rat
Host:	Rabbit
Isotype:	IgG
Clonality:	Polyclonal
Immunogen:	The antiserum was produced against synthesized peptide derived from internal of human RPL37.
Formulation:	Phosphate buffered saline (without Mg <sup>2+</sup> and Ca <sup>2+</sup> ), pH 7.4, 150mM NaCl, 0.02% sodium azide and 50% glycerol.
Concentration:	lot specific
Purification:	The antibody was affinity-purified from rabbit antiserum by affinity-chromatography using epitope-specific immunogen.
Conjugation:	Unconjugated
Storage:	Store at -20°C as received.
Stability:	Stable for 12 months from date of receipt.
Gene Name:	ribosomal protein L37
Database Link:	<a href="#">NP_000988</a> <a href="#">Entrez Gene 67281 Mouse</a> <a href="#">Entrez Gene 81770 Rat</a> <a href="#">Entrez Gene 6167 Human</a> <a href="#">P61927</a>
Synonyms:	L37
Note:	RPL37 antibody detects endogenous levels of total RPL37 protein.
Protein Pathways:	Ribosome



[View online »](#)

**Product images:**

Immunohistochemistry analysis of paraffin-embedded human breast carcinoma tissue using RPL37 antibody. The picture on the right is treated with the synthesized peptide.