

Product datasheet for **TA314468**

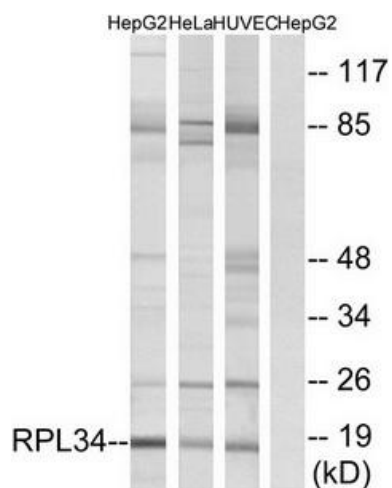
RPL34 Rabbit Polyclonal Antibody

Product data:

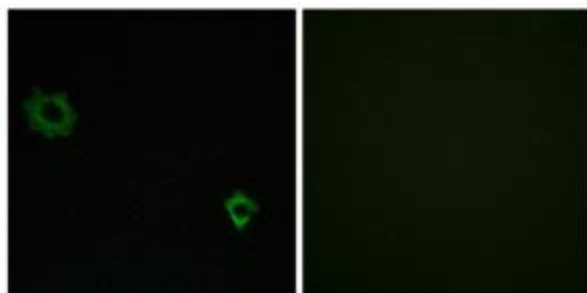
Product Type:	Primary Antibodies
Applications:	IF, WB
Recommended Dilution:	WB: 1:500~1:3000, IF: 1:100~1:500, ELISA: 1:20000
Reactivity:	Human, Mouse, Rat
Host:	Rabbit
Isotype:	IgG
Clonality:	Polyclonal
Immunogen:	The antiserum was produced against synthesized peptide derived from internal of human RPL34.
Formulation:	Phosphate buffered saline (without Mg ²⁺ and Ca ²⁺), pH 7.4, 150mM NaCl, 0.02% sodium azide and 50% glycerol.
Concentration:	lot specific
Purification:	The antibody was affinity-purified from rabbit antiserum by affinity-chromatography using epitope-specific immunogen.
Conjugation:	Unconjugated
Storage:	Store at -20°C as received.
Stability:	Stable for 12 months from date of receipt.
Gene Name:	ribosomal protein L34
Database Link:	NP_000986 Entrez Gene 68436 MouseEntrez Gene 362041 RatEntrez Gene 6164 Human P49207
Synonyms:	L34
Note:	PL34 antibody detects endogenous levels of total RPL34 protein.
Protein Pathways:	Ribosome



[View online »](#)

Product images:


Western blot analysis of extracts from HepG2 cells, HeLa cells and HUVEC cells, using RPL34 antibody. The lane on the right is treated with the synthesized peptide.



Immunofluorescence analysis of HUVEC cells, using RPL34 antibody. The picture on the right is treated with the synthesized peptide.