

## Product datasheet for **TA314465**

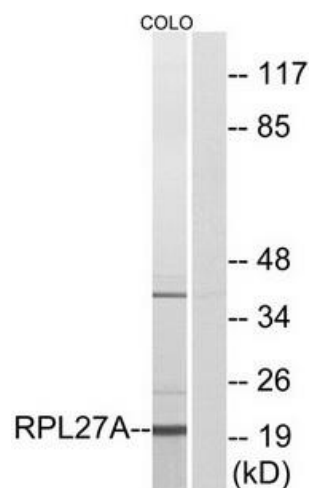
### RPL27A Rabbit Polyclonal Antibody

#### Product data:

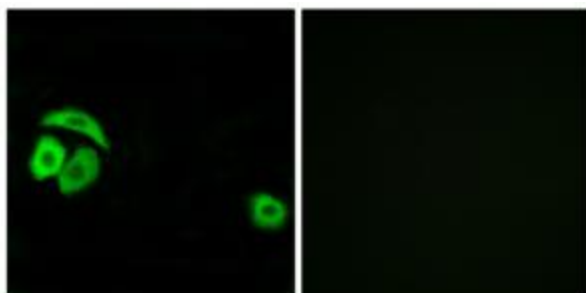
Product Type:	Primary Antibodies
Applications:	IF, WB
Recommended Dilution:	WB: 1:500~1:3000, IF: 1:100~1:500, ELISA: 1:40000
Reactivity:	Human, Mouse, Rat
Host:	Rabbit
Isotype:	IgG
Clonality:	Polyclonal
Immunogen:	The antiserum was produced against synthesized peptide derived from C-terminal of human RPL27A.
Formulation:	Phosphate buffered saline (without Mg <sup>2+</sup> and Ca <sup>2+</sup> ), pH 7.4, 150mM NaCl, 0.02% sodium azide and 50% glycerol.
Concentration:	lot specific
Purification:	The antibody was affinity-purified from rabbit antiserum by affinity-chromatography using epitope-specific immunogen.
Conjugation:	Unconjugated
Storage:	Store at -20°C as received.
Stability:	Stable for 12 months from date of receipt.
Gene Name:	ribosomal protein L27a
Database Link:	<a href="#">NP_000981</a> <a href="#">Entrez Gene 26451 Mouse</a> <a href="#">Entrez Gene 293418 Rat</a> <a href="#">Entrez Gene 6157 Human</a> <a href="#">P46776</a>
Synonyms:	L27A
Note:	RPL27A antibody detects endogenous levels of total RPL27A protein.
Protein Pathways:	Ribosome



[View online »](#)

**Product images:**

Western blot analysis of extracts from COLO cells, using RPL27A antibody. The lane on the right is treated with the synthesized peptide.



Immunofluorescence analysis of A549 cells, using RPL27A antibody. The picture on the right is treated with the synthesized peptide.