

## Product datasheet for **TA314461**

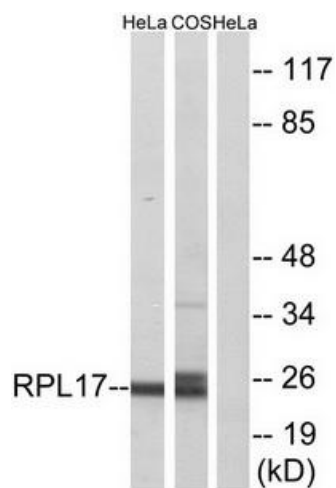
### RPL17 Rabbit Polyclonal Antibody

#### Product data:

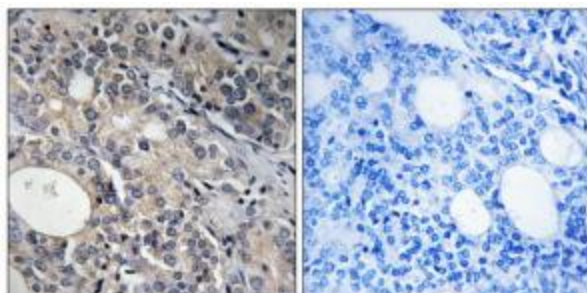
Product Type:	Primary Antibodies
Applications:	IHC, WB
Recommended Dilution:	WB: 1:500~1:3000, IHC: 1:50~1:100, ELISA: 1:10000
Reactivity:	Human, Mouse, Rat
Host:	Rabbit
Isotype:	IgG
Clonality:	Polyclonal
Immunogen:	The antiserum was produced against synthesized peptide derived from internal of human RPL17.
Formulation:	Phosphate buffered saline (without Mg <sup>2+</sup> and Ca <sup>2+</sup> ), pH 7.4, 150mM NaCl, 0.02% sodium azide and 50% glycerol.
Concentration:	lot specific
Purification:	The antibody was affinity-purified from rabbit antiserum by affinity-chromatography using epitope-specific immunogen.
Conjugation:	Unconjugated
Storage:	Store at -20°C as received.
Stability:	Stable for 12 months from date of receipt.
Gene Name:	ribosomal protein L17
Database Link:	<a href="#">NP_000976</a> <a href="#">Entrez Gene 291434 RatEntrez Gene 319195 MouseEntrez Gene 6139 Human P18621</a>
Synonyms:	L17; PD-1; RPL23
Note:	RPL17 antibody detects endogenous levels of total RPL17 protein.
Protein Pathways:	Ribosome



[View online »](#)

**Product images:**

Western blot analysis of extracts from HeLa cells and COS cells, using RPL17 antibody. The lane on the right is treated with the synthesized peptide.



Immunohistochemistry analysis of paraffin-embedded human prostate carcinoma tissue using RPL17 antibody. The picture on the right is treated with the synthesized peptide.