

Product datasheet for TA314458

RPL11 Rabbit Polyclonal Antibody

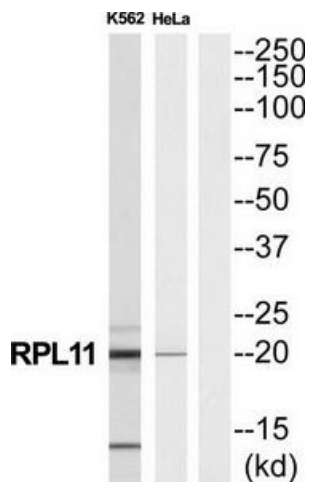
Product data:

Product Type:	Primary Antibodies
Applications:	WB
Recommended Dilution:	WB: 1:500~1:3000, ELISA: 1:10000
Reactivity:	Human, Mouse, Rat
Host:	Rabbit
Isotype:	IgG
Clonality:	Polyclonal
Immunogen:	The antiserum was produced against synthesized peptide derived from C-terminal of human RPL11.
Formulation:	Phosphate buffered saline (without Mg ²⁺ and Ca ²⁺), pH 7.4, 150mM NaCl, 0.02% sodium azide and 50% glycerol.
Concentration:	lot specific
Purification:	The antibody was affinity-purified from rabbit antiserum by affinity-chromatography using epitope-specific immunogen.
Conjugation:	Unconjugated
Storage:	Store at -20°C as received.
Stability:	Stable for 12 months from date of receipt.
Gene Name:	ribosomal protein L11
Database Link:	NP_000966 Entrez Gene 67025 Mouse Entrez Gene 362631 Rat Entrez Gene 6135 Human
Synonyms:	DBA7; GIG34; L11
Note:	RPL11 antibody detects endogenous levels of total RPL11 protein.
Protein Pathways:	Ribosome

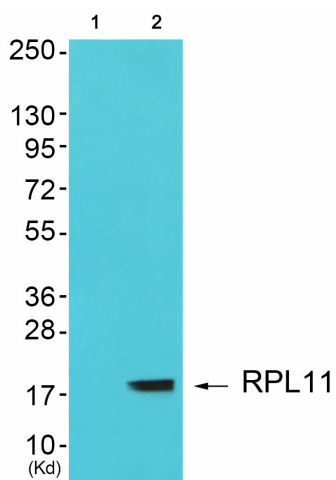


[View online »](#)

Product images:



Western blot analysis of extracts from K562 cells and HeLa cells, using RPL11 antibody. The lane on the right is treated with the synthesized peptide.



Western blot analysis of extracts from cos-7 cells (Lane 2), using RPL11 Antibody. The lane on the left is treated with synthesized peptide.