

Product datasheet for **TA314457**

RPL10 Rabbit Polyclonal Antibody

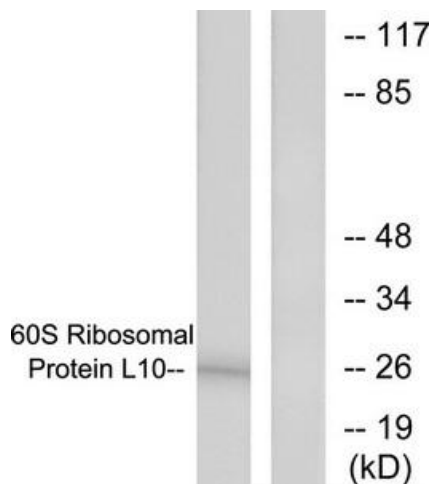
Product data:

Product Type:	Primary Antibodies
Applications:	WB
Recommended Dilution:	WB: 1:500~1:3000, ELISA: 1:20000
Reactivity:	Human, Mouse, Rat
Host:	Rabbit
Isotype:	IgG
Clonality:	Polyclonal
Immunogen:	The antiserum was produced against synthesized peptide derived from internal of human 60S Ribosomal Protein L10.
Formulation:	Phosphate buffered saline (without Mg ²⁺ and Ca ²⁺), pH 7.4, 150mM NaCl, 0.02% sodium azide and 50% glycerol.
Concentration:	lot specific
Purification:	The antibody was affinity-purified from rabbit antiserum by affinity-chromatography using epitope-specific immunogen.
Conjugation:	Unconjugated
Storage:	Store at -20°C as received.
Stability:	Stable for 12 months from date of receipt.
Gene Name:	ribosomal protein L10
Database Link:	NP_006004 Entrez Gene 81764 Rat Entrez Gene 110954 Mouse Entrez Gene 6134 Human P27635
Synonyms:	AUTSX5; DXS648; DXS648E; L10; NOV; QM
Note:	60S Ribosomal Protein L10 antibody detects endogenous levels of total 60S Ribosomal Protein L10 protein.
Protein Families:	Druggable Genome
Protein Pathways:	Ribosome

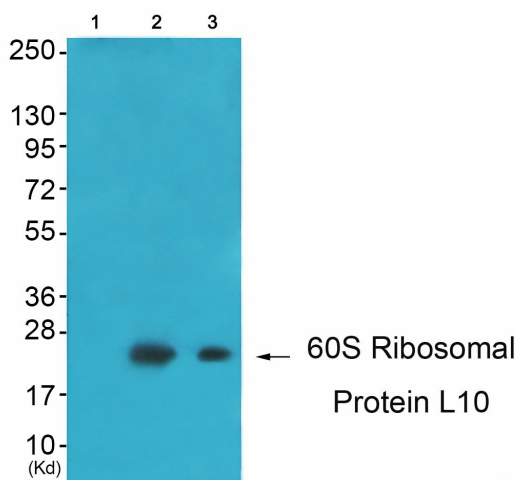


[View online »](#)

Product images:



Western blot analysis of extracts from K562 cells, treated with Insulin (0.01u/ml, 15mins), using 60S Ribosomal Protein L10 antibody. The lane on the right is treated with the synthesized peptide.



Western blot analysis of extracts from K562 cells (Lane 2), JK cells (Lane 3) and 293 cells (Lane 4), using 60S Ribosomal Protein L10 Antibody. The lane on the left is treated with synthesized peptide.