

## Product datasheet for **TA314453**

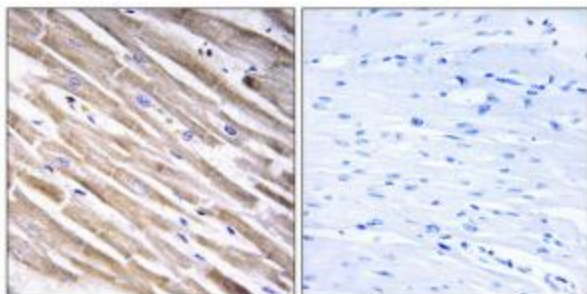
### RPL3L Rabbit Polyclonal Antibody

#### Product data:

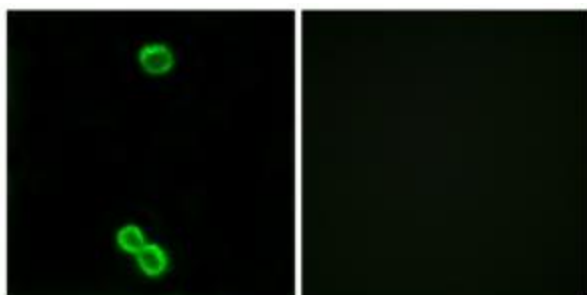
Product Type:	Primary Antibodies
Applications:	IF, IHC
Recommended Dilution:	IHC: 1:50~1:100, IF: 1:100~1:500, ELISA: 1:40000
Reactivity:	Human
Host:	Rabbit
Isotype:	IgG
Clonality:	Polyclonal
Immunogen:	The antiserum was produced against synthesized peptide derived from internal of human RPL3L.
Formulation:	Phosphate buffered saline (without Mg <sup>2+</sup> and Ca <sup>2+</sup> ), pH 7.4, 150mM NaCl, 0.02% sodium azide and 50% glycerol.
Concentration:	lot specific
Purification:	The antibody was affinity-purified from rabbit antiserum by affinity-chromatography using epitope-specific immunogen.
Conjugation:	Unconjugated
Storage:	Store at -20°C as received.
Stability:	Stable for 12 months from date of receipt.
Gene Name:	ribosomal protein L3 like
Database Link:	<a href="#">NP_005052</a> <a href="#">Entrez Gene 6123 Human</a> <a href="#">Q92901</a>
Synonyms:	60S ribosomal protein L3-like; ribosomal protein L3-like
Note:	RPL3L antibody detects endogenous levels of total RPL3L protein.
Protein Pathways:	Ribosome



[View online »](#)

**Product images:**

Immunohistochemistry analysis of paraffin-embedded human heart tissue using RPL3L antibody. The picture on the right is treated with the synthesized peptide.



Immunofluorescence analysis of MCF-7 cells, using RPL3L antibody. The picture on the right is treated with the synthesized peptide.