

## Product datasheet for **TA314452**

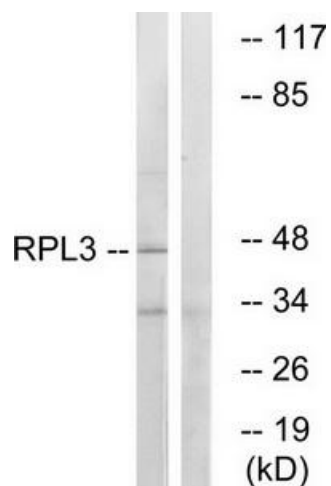
### RPL3 Rabbit Polyclonal Antibody

#### Product data:

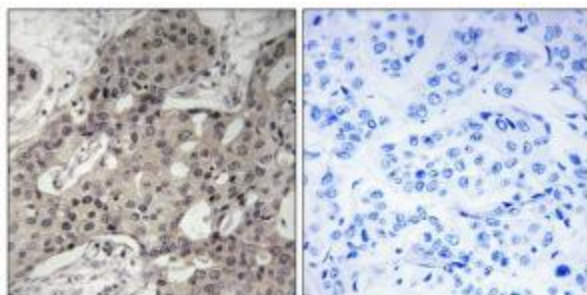
Product Type:	Primary Antibodies
Applications:	IHC, WB
Recommended Dilution:	WB: 1:500~1:3000, IHC: 1:50~1:100, ELISA: 1:5000
Reactivity:	Human, Mouse, Rat
Host:	Rabbit
Isotype:	IgG
Clonality:	Polyclonal
Immunogen:	The antiserum was produced against synthesized peptide derived from internal of human RPL3.
Formulation:	Phosphate buffered saline (without Mg <sup>2+</sup> and Ca <sup>2+</sup> ), pH 7.4, 150mM NaCl, 0.02% sodium azide and 50% glycerol.
Concentration:	lot specific
Purification:	The antibody was affinity-purified from rabbit antiserum by affinity-chromatography using epitope-specific immunogen.
Conjugation:	Unconjugated
Storage:	Store at -20°C as received.
Stability:	Stable for 12 months from date of receipt.
Gene Name:	ribosomal protein L3
Database Link:	<a href="#">NP_000958</a> <a href="#">Entrez Gene 27367 MouseEntrez Gene 300079 RatEntrez Gene 6122 Human P39023</a>
Synonyms:	ASC-1; L3; TARBP-B
Note:	RPL3 antibody detects endogenous levels of total RPL3 protein.
Protein Pathways:	Ribosome



[View online »](#)

**Product images:**

Western blot analysis of extracts from HT-29 cells, using RPL3 antibody. The lane on the right is treated with the synthesized peptide.



Immunohistochemistry analysis of paraffin-embedded human breast carcinoma tissue using RPL3 antibody. The picture on the right is treated with the synthesized peptide.