

Product datasheet for **TA314447**

RIT1 Rabbit Polyclonal Antibody

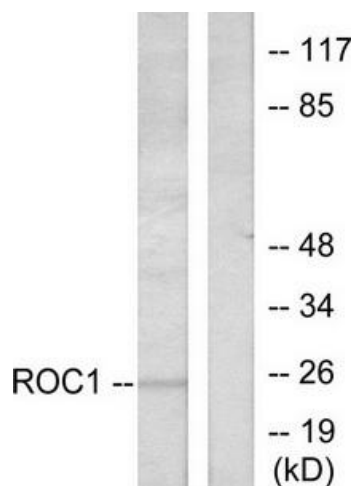
Product data:

Product Type:	Primary Antibodies
Applications:	WB
Recommended Dilution:	WB: 1:500~1:3000, ELISA: 1:10000
Reactivity:	Human, Mouse
Host:	Rabbit
Isotype:	IgG
Clonality:	Polyclonal
Immunogen:	The antiserum was produced against synthesized peptide derived from human RIT1.
Formulation:	Phosphate buffered saline (without Mg ²⁺ and Ca ²⁺), pH 7.4, 150mM NaCl, 0.02% sodium azide and 50% glycerol.
Concentration:	lot specific
Purification:	The antibody was affinity-purified from rabbit antiserum by affinity-chromatography using epitope-specific immunogen.
Conjugation:	Unconjugated
Storage:	Store at -20°C as received.
Stability:	Stable for 12 months from date of receipt.
Gene Name:	Ras like without CAAX 1
Database Link:	NP_008843 Entrez Gene 19769 Mouse Entrez Gene 6016 Human Q92963
Synonyms:	NS8; RIBB; RIT; ROC1
Note:	RIT1 antibody detects endogenous levels of total RIT1 protein.

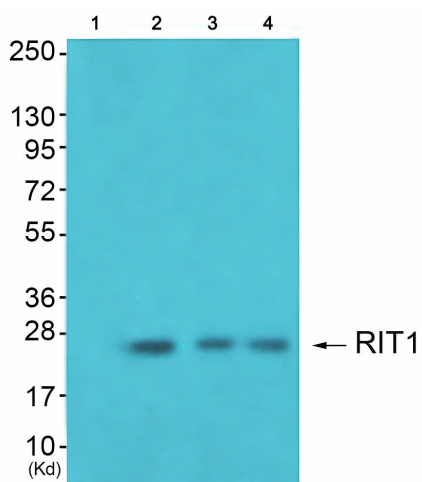


[View online »](#)

Product images:



Western blot analysis of extracts from Jurkat cells, using RIT1 antibody (#TA314447). The lane on the right is treated with the synthesized peptide.



Western blot analysis of extracts from K562 cells (Lane 2), JK cells (Lane 3) and 293 cells (Lane 4), using RIT1 Antibody. The lane on the left is treated with synthesized peptide.