

Product datasheet for **TA314445**

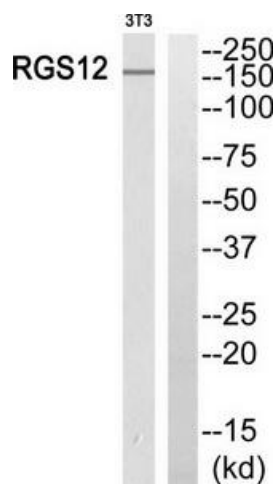
RGS12 Rabbit Polyclonal Antibody

Product data:

| | |
|-----------------------|---|
| Product Type: | Primary Antibodies |
| Applications: | WB |
| Recommended Dilution: | WB: 1:500~1:3000, ELISA: 1:40000 |
| Reactivity: | Human, Mouse, Rat |
| Host: | Rabbit |
| Isotype: | IgG |
| Clonality: | Polyclonal |
| Immunogen: | The antiserum was produced against synthesized peptide derived from N-terminal of human RGS12. |
| Formulation: | Phosphate buffered saline (without Mg ²⁺ and Ca ²⁺), pH 7.4, 150mM NaCl, 0.02% sodium azide and 50% glycerol. |
| Concentration: | lot specific |
| Purification: | The antibody was affinity-purified from rabbit antiserum by affinity-chromatography using epitope-specific immunogen. |
| Conjugation: | Unconjugated |
| Storage: | Store at -20°C as received. |
| Stability: | Stable for 12 months from date of receipt. |
| Gene Name: | regulator of G-protein signaling 12 |
| Database Link: | NP_002917 Entrez Gene 54292 Rat Entrez Gene 71729 Mouse Entrez Gene 6002 Human O14924 |
| Synonyms: | DKFZp761K1617; DKFZp761K1817 |
| Note: | RGS12 antibody detects endogenous levels of total RGS12 protein. |
| Protein Families: | Druggable Genome |



[View online »](#)

Product images:

Western blot analysis of extracts from 3T3 cells, using RGS12 antibody. The lane on the right is treated with the synthesized peptide.