

Product datasheet for **TA314427**

Rb (RB1) Rabbit Polyclonal Antibody

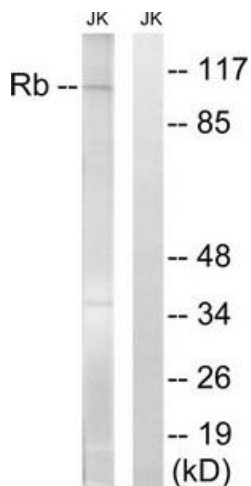
Product data:

Product Type:	Primary Antibodies
Applications:	WB
Recommended Dilution:	WB: 1:500~1:3000, ELISA: 1:40000
Reactivity:	Human, Mouse, Rat
Host:	Rabbit
Isotype:	IgG
Clonality:	Polyclonal
Immunogen:	The antiserum was produced against synthesized non-phosphopeptide derived from human Retinoblastoma around the phosphorylation site of serine 608 (Y-L-SP-P-V).
Formulation:	Phosphate buffered saline (without Mg ²⁺ and Ca ²⁺), pH 7.4, 150mM NaCl, 0.02% sodium azide and 50% glycerol.
Concentration:	lot specific
Purification:	The antibody was affinity-purified from rabbit antiserum by affinity-chromatography using epitope-specific immunogen.
Conjugation:	Unconjugated
Storage:	Store at -20°C as received.
Stability:	Stable for 12 months from date of receipt.
Gene Name:	RB transcriptional corepressor 1
Database Link:	NP_000312 Entrez Gene 19645 MouseEntrez Gene 24708 RatEntrez Gene 5925 Human P06400
Synonyms:	OSRC; p105-Rb; pp110; PPP1R130; pRb; RB
Note:	Retinoblastoma (Ab-608) antibody detects endogenous levels of total Retinoblastoma protein.
Protein Families:	Druggable Genome, Transcription Factors
Protein Pathways:	Bladder cancer, Cell cycle, Chronic myeloid leukemia, Glioma, Melanoma, Non-small cell lung cancer, Pancreatic cancer, Pathways in cancer, Prostate cancer, Small cell lung cancer

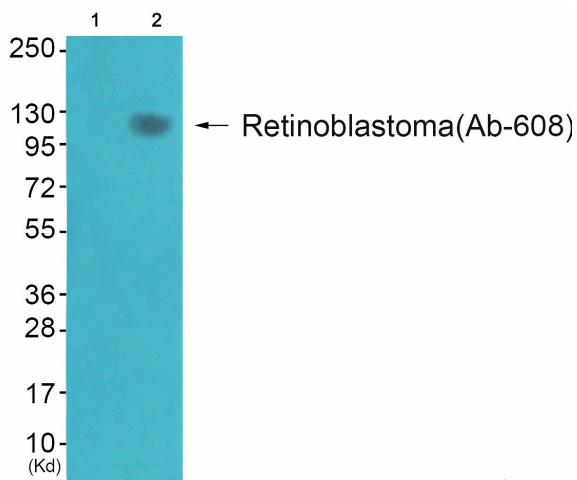


[View online »](#)

Product images:



Western blot analysis of extracts from Jurkat cells, treated with PMA (125ng/ml, 30mins), using Retinoblastoma (Ab-608) antibody. The lane on the right is treated with the synthesized peptide.



Western blot analysis of extracts from JK cells (Lane 2), using Retinoblastoma (Ab-608) Antibody. The lane on the left is treated with synthesized peptide.