

## Product datasheet for **TA314422**

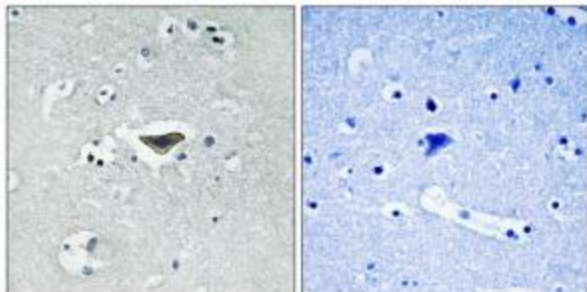
### Rasgrf1 Rabbit Polyclonal Antibody

#### Product data:

Product Type:	Primary Antibodies
Applications:	IHC
Recommended Dilution:	IHC: 1:50~1:100, ELISA: 1:20000
Reactivity:	Mouse, Rat
Modifications:	Phospho-specific
Host:	Rabbit
Isotype:	IgG
Clonality:	Polyclonal
Immunogen:	The antiserum was produced against synthesized phosphopeptide derived from human Ras-GRF1 around the phosphorylation site of serine 916 (R-M-SP-L-A).
Formulation:	Phosphate buffered saline (without Mg <sup>2+</sup> and Ca <sup>2+</sup> ), pH 7.4, 150mM NaCl, 0.02% sodium azide and 50% glycerol.
Concentration:	lot specific
Purification:	The antibody was affinity-purified from rabbit antiserum by affinity-chromatography using epitope-specific immunogen.
Conjugation:	Unconjugated
Storage:	Store at -20°C as received.
Stability:	Stable for 12 months from date of receipt.
Gene Name:	RAS protein-specific guanine nucleotide-releasing factor 1
Database Link:	<a href="#">NP_035375</a> <a href="#">Entrez Gene 192213 Rat</a> <a href="#">Entrez Gene 19417 Mouse</a> <a href="#">P27671</a>
Synonyms:	CDC25; CDC25L; GNRP; GRF1; GRF55; H-GRF55; PP13187; Ras-GRF1
Note:	Ras-GRF1 (Phospho-Ser916) antibody detects endogenous levels of Ras-GRF1 only when phosphorylated at serine 916.



[View online »](#)

**Product images:**

Immunohistochemistry analysis of paraffin-embedded human brain tissue using Ras-GRF1 (Phospho-Ser916) antibody. The picture on the right is treated with the synthesized peptide.