

Product datasheet for **TA314421**

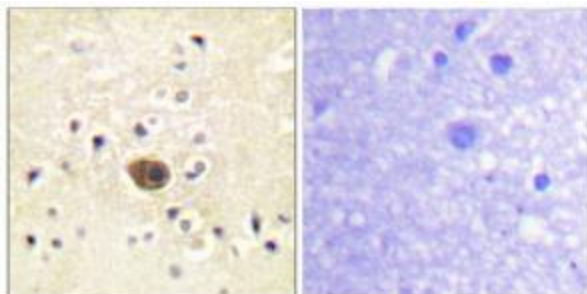
RASGRF1 Rabbit Polyclonal Antibody

Product data:

Product Type:	Primary Antibodies
Applications:	IHC
Recommended Dilution:	IHC: 1:50~1:100, ELISA: 1:1000
Reactivity:	Human, Mouse, Rat
Host:	Rabbit
Isotype:	IgG
Clonality:	Polyclonal
Immunogen:	The antiserum was produced against synthesized peptide derived from Internal of human Ras-GRF1.
Formulation:	Phosphate buffered saline (without Mg ²⁺ and Ca ²⁺), pH 7.4, 150mM NaCl, 0.02% sodium azide and 50% glycerol.
Concentration:	lot specific
Purification:	The antibody was affinity-purified from rabbit antiserum by affinity-chromatography using epitope-specific immunogen.
Conjugation:	Unconjugated
Storage:	Store at -20°C as received.
Stability:	Stable for 12 months from date of receipt.
Gene Name:	Ras protein specific guanine nucleotide releasing factor 1
Database Link:	NP_722522 Entrez Gene 19417 Mouse Entrez Gene 192213 Rat Entrez Gene 5923 Human Q13972
Synonyms:	CDC25; CDC25L; GNRP; GRF1; GRF55; H-GRF55; PP13187; ras-GRF1
Note:	Ras-GRF1 antibody detects endogenous levels of total Ras-GRF1 protein
Protein Families:	Druggable Genome
Protein Pathways:	Focal adhesion, MAPK signaling pathway



[View online »](#)

Product images:

Immunohistochemistry analysis of paraffin-embedded human brain tissue using Ras-GRF1 antibody. The picture on the right is treated with the synthesized peptide.