

Product datasheet for **TA314419**

RAD52 Rabbit Polyclonal Antibody

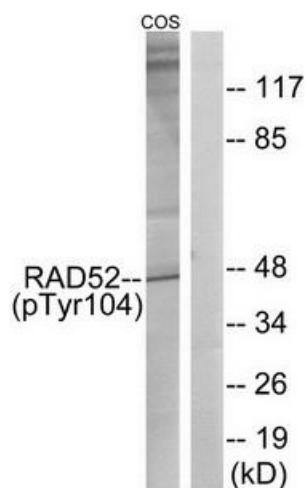
Product data:

Product Type:	Primary Antibodies
Applications:	WB
Recommended Dilution:	WB: 1:500~1:3000, ELISA: 1:20000
Reactivity:	Human, Mouse
Modifications:	Phospho-specific
Host:	Rabbit
Isotype:	IgG
Clonality:	Polyclonal
Immunogen:	The antiserum was produced against synthesized phosphopeptide derived from human RAD52 around the phosphorylation site of tyrosine 104 (K-F-YP-V-G).
Formulation:	Phosphate buffered saline (without Mg ²⁺ and Ca ²⁺), pH 7.4, 150mM NaCl, 0.02% sodium azide and 50% glycerol.
Concentration:	lot specific
Purification:	The antibody was affinity-purified from rabbit antiserum by affinity-chromatography using epitope-specific immunogen.
Conjugation:	Unconjugated
Storage:	Store at -20°C as received.
Stability:	Stable for 12 months from date of receipt.
Gene Name:	RAD52 homolog, DNA repair protein
Database Link:	NP_602296 Entrez Gene 19365 Mouse Entrez Gene 5893 Human P43351
Synonyms:	RP11-359B12.2
Note:	RAD52 (Phospho-Tyr104) antibody detects endogenous levels of RAD52 only when phosphorylated at tyrosine 104.
Protein Families:	Druggable Genome
Protein Pathways:	Homologous recombination



[View online »](#)

Product images:



Western blot analysis of extracts from COS cells, treated with H₂O₂ (100 μM, 30 mins), using RAD52 (Phospho-Tyr104) antibody. The lane on the right is treated with the synthesized peptide.