

## Product datasheet for **TA314416**

### MOK protein kinase (MOK) Rabbit Polyclonal Antibody

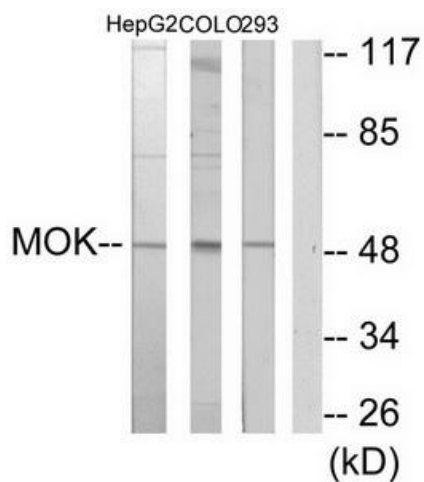
#### Product data:

Product Type:	Primary Antibodies
Applications:	IHC, WB
Recommended Dilution:	WB: 1:500~1:3000, IHC: 1:50~1:100, ELISA: 1:1000
Reactivity:	Human
Host:	Rabbit
Isotype:	IgG
Clonality:	Polyclonal
Immunogen:	The antiserum was produced against synthesized peptide derived from internal of human MOK.
Formulation:	Phosphate buffered saline (without Mg <sup>2+</sup> and Ca <sup>2+</sup> ), pH 7.4, 150mM NaCl, 0.02% sodium azide and 50% glycerol.
Concentration:	lot specific
Purification:	The antibody was affinity-purified from rabbit antiserum by affinity-chromatography using epitope-specific immunogen.
Conjugation:	Unconjugated
Storage:	Store at -20°C as received.
Stability:	Stable for 12 months from date of receipt.
Gene Name:	MOK protein kinase
Database Link:	<a href="#">NP_055041</a> <a href="#">Entrez Gene 5891 Human</a> <a href="#">Q9UQ07</a>
Synonyms:	RAGE; RAGE-1; RAGE1; STK30
Note:	MOK antibody detects endogenous levels of total MOK protein.
Protein Families:	Druggable Genome, Protein Kinase

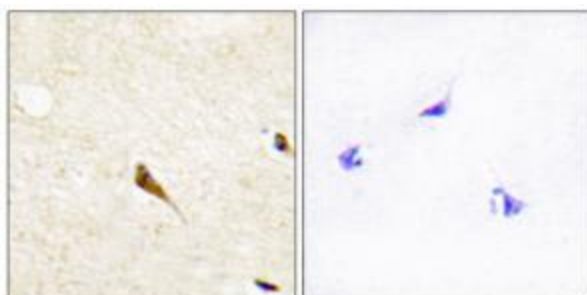


[View online »](#)

Product images:



Western blot analysis of extracts from HepG2 cells, COLO205 cells and 293 cells, using MOK antibody. The lane on the right is treated with the synthesized peptide.



Immunohistochemistry analysis of paraffin-embedded human brain tissue using MOK antibody. The picture on the right is treated with the synthesized peptide.