

Product datasheet for **TA314415**

hHR23b (RAD23B) Rabbit Polyclonal Antibody

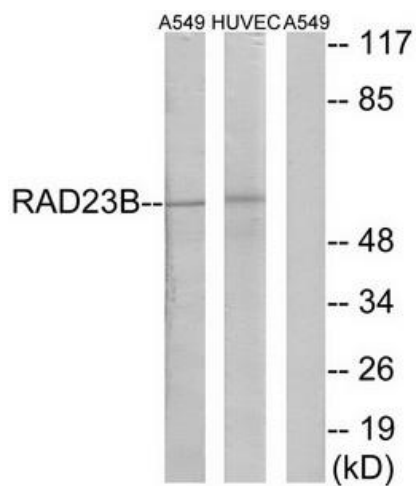
Product data:

Product Type:	Primary Antibodies
Applications:	WB
Recommended Dilution:	WB: 1:500~1:3000, ELISA: 1:20000
Reactivity:	Human, Mouse, Rat
Host:	Rabbit
Isotype:	IgG
Clonality:	Polyclonal
Immunogen:	The antiserum was produced against synthesized peptide derived from N-terminal of human RAD23B.
Formulation:	Phosphate buffered saline (without Mg ²⁺ and Ca ²⁺), pH 7.4, 150mM NaCl, 0.02% sodium azide and 50% glycerol.
Concentration:	lot specific
Purification:	The antibody was affinity-purified from rabbit antiserum by affinity-chromatography using epitope-specific immunogen.
Conjugation:	Unconjugated
Storage:	Store at -20°C as received.
Stability:	Stable for 12 months from date of receipt.
Gene Name:	RAD23 homolog B, nucleotide excision repair protein
Database Link:	NP_002865 Entrez Gene 19359 MouseEntrez Gene 298012 RatEntrez Gene 5887 Human P54727
Synonyms:	HHR23B; HR23B; P58
Note:	RAD23B antibody detects endogenous levels of total RAD23B protein.
Protein Families:	Druggable Genome
Protein Pathways:	Nucleotide excision repair



[View online »](#)

Product images:



Western blot analysis of extracts from A549 cells and HUVEC cells, using RAD23B antibody. The lane on the right is treated with the synthesized peptide.