

Product datasheet for **TA314413**

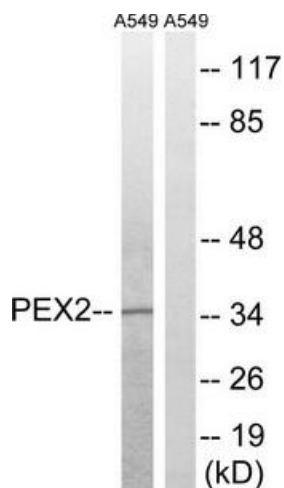
PEX2 Rabbit Polyclonal Antibody

Product data:

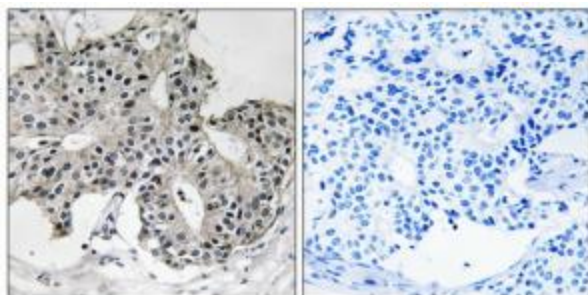
Product Type:	Primary Antibodies
Applications:	IHC, WB
Recommended Dilution:	WB: 1:500~1:3000, IHC: 1:50~1:100, ELISA: 1:20000
Reactivity:	Human
Host:	Rabbit
Isotype:	IgG
Clonality:	Polyclonal
Immunogen:	The antiserum was produced against synthesized peptide derived from N-terminal of human PXMP3.
Formulation:	Phosphate buffered saline (without Mg ²⁺ and Ca ²⁺), pH 7.4, 150mM NaCl, 0.02% sodium azide and 50% glycerol.
Concentration:	lot specific
Purification:	The antibody was affinity-purified from rabbit antiserum by affinity-chromatography using epitope-specific immunogen.
Conjugation:	Unconjugated
Storage:	Store at -20°C as received.
Stability:	Stable for 12 months from date of receipt.
Gene Name:	peroxisomal biogenesis factor 2
Database Link:	NP_000309 Entrez Gene 5828 Human P28328
Synonyms:	PAF1; PBD5A; PBD5B; PMP3; PMP35; PXMP3; RNF72; ZWS3
Note:	PXMP3 antibody detects endogenous levels of total PXMP3 protein.
Protein Families:	Druggable Genome, Transmembrane



[View online »](#)

Product images:

Western blot analysis of extracts from A549 cells, using PXMP3 antibody. The lane on the right is treated with the synthesized peptide.



Immunohistochemistry analysis of paraffin-embedded human breast carcinoma tissue using PXMP3 antibody. The picture on the right is treated with the synthesized peptide.