

Product datasheet for **TA314411**

Pentraxin 3 (PTX3) Rabbit Polyclonal Antibody

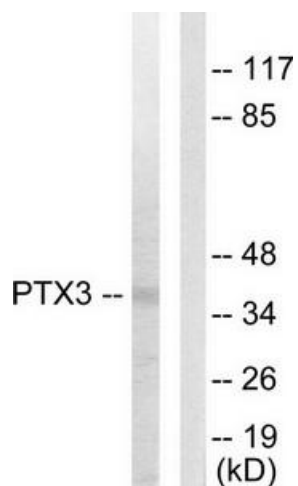
Product data:

Product Type:	Primary Antibodies
Applications:	IF, WB
Recommended Dilution:	WB: 1:500~1:3000, IF: 1:100~1:500, ELISA: 1:10000
Reactivity:	Human, Mouse
Host:	Rabbit
Isotype:	IgG
Clonality:	Polyclonal
Immunogen:	The antiserum was produced against synthesized peptide derived from N-terminal of human PTX3.
Formulation:	Phosphate buffered saline (without Mg ²⁺ and Ca ²⁺), pH 7.4, 150mM NaCl, 0.02% sodium azide and 50% glycerol.
Concentration:	lot specific
Purification:	The antibody was affinity-purified from rabbit antiserum by affinity-chromatography using epitope-specific immunogen.
Conjugation:	Unconjugated
Storage:	Store at -20°C as received.
Stability:	Stable for 12 months from date of receipt.
Gene Name:	pentraxin 3
Database Link:	NP_002843 Entrez Gene 19288 Mouse Entrez Gene 5806 Human P26022
Synonyms:	TNFAIP5; TSG-14
Note:	PTX3 antibody detects endogenous levels of total PTX3 protein.
Protein Families:	Secreted Protein

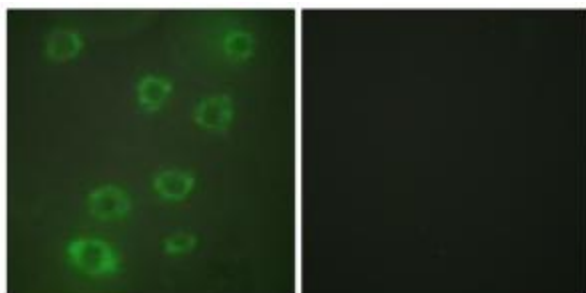


[View online »](#)

Product images:



Western blot analysis of extracts from 293 cells, using PTX3 antibody. The lane on the right is treated with the synthesized peptide.



Immunofluorescence analysis of HUVEC cells, using PTX3 antibody. The picture on the right is treated with the synthesized peptide.