

## Product datasheet for **TA314410**

### PTPRZ1 Rabbit Polyclonal Antibody

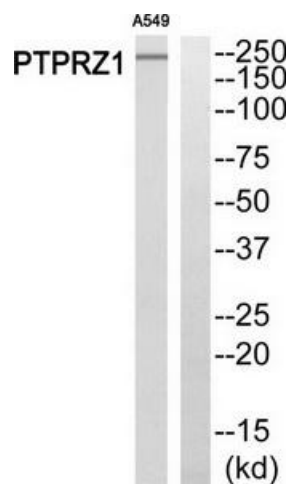
#### Product data:

Product Type:	Primary Antibodies
Applications:	WB
Recommended Dilution:	WB: 1:500~1:3000, ELISA: 1:5000
Reactivity:	Human, Mouse, Rat
Host:	Rabbit
Isotype:	IgG
Clonality:	Polyclonal
Immunogen:	The antiserum was produced against synthesized peptide derived from N-terminal of human PTPRZ1.
Formulation:	Phosphate buffered saline (without Mg <sup>2+</sup> and Ca <sup>2+</sup> ), pH 7.4, 150mM NaCl, 0.02% sodium azide and 50% glycerol.
Concentration:	lot specific
Purification:	The antibody was affinity-purified from rabbit antiserum by affinity-chromatography using epitope-specific immunogen.
Conjugation:	Unconjugated
Storage:	Store at -20°C as received.
Stability:	Stable for 12 months from date of receipt.
Gene Name:	protein tyrosine phosphatase, receptor type Z1
Database Link:	<a href="#">NP_002842</a> <a href="#">Entrez Gene 19283 Mouse</a> <a href="#">Entrez Gene 25613 Rat</a> <a href="#">Entrez Gene 5803 Human</a> <a href="#">P23471</a>
Synonyms:	HPTPZ; HPTPzeta; phosphacan; PTP-ZETA; PTP18; PTPRZ; PTPZ; R-PTP-zeta-2; RPTPB; RPTPbeta
Note:	PTPRZ1 antibody detects endogenous levels of total PTPRZ1 protein.
Protein Families:	Druggable Genome, Phosphatase, Transmembrane
Protein Pathways:	Epithelial cell signaling in Helicobacter pylori infection



[View online »](#)

## Product images:



Western blot analysis of extracts from A549 cells, using PTPRZ1 antibody. The lane on the right is treated with the synthesized peptide.