

Product datasheet for **TA314409**

PTPRN2 Rabbit Polyclonal Antibody

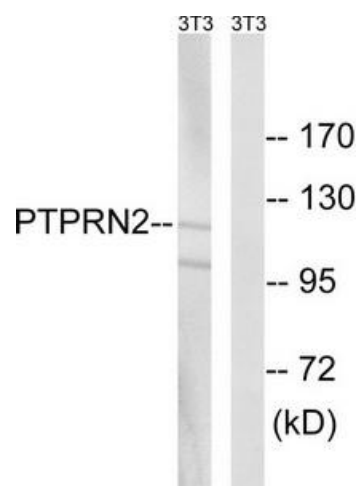
Product data:

Product Type:	Primary Antibodies
Applications:	WB
Recommended Dilution:	WB: 1:500~1:3000, ELISA: 1:10000
Reactivity:	Human, Mouse, Rat
Host:	Rabbit
Isotype:	IgG
Clonality:	Polyclonal
Immunogen:	The antiserum was produced against synthesized peptide derived from internal of human PTPRN2.
Formulation:	Phosphate buffered saline (without Mg ²⁺ and Ca ²⁺), pH 7.4, 150mM NaCl, 0.02% sodium azide and 50% glycerol.
Concentration:	lot specific
Purification:	The antibody was affinity-purified from rabbit antiserum by affinity-chromatography using epitope-specific immunogen.
Conjugation:	Unconjugated
Storage:	Store at -20°C as received.
Stability:	Stable for 12 months from date of receipt.
Gene Name:	protein tyrosine phosphatase, receptor type N2
Database Link:	NP_002838 Entrez Gene 19276 Mouse Entrez Gene 29714 Rat Entrez Gene 5799 Human Q92932
Synonyms:	IA-2beta; IAR; ICAAR; PTPRP; R-PTP-N2
Note:	PTPRN2 antibody detects endogenous levels of total PTPRN2 protein.
Protein Families:	Druggable Genome, Phosphatase
Protein Pathways:	Type I diabetes mellitus



[View online »](#)

Product images:



Western blot analysis of extracts from NIH/3T3 cells, using PTPRN2 antibody. The lane on the right is treated with the synthesized peptide.