

Product datasheet for **TA314405**

PTGIS Rabbit Polyclonal Antibody

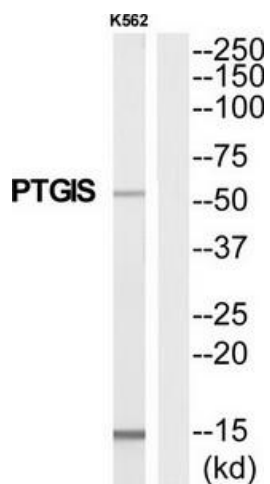
Product data:

Product Type:	Primary Antibodies
Applications:	WB
Recommended Dilution:	WB: 1:500~1:3000, ELISA: 1:40000
Reactivity:	Human, Mouse, Rat
Host:	Rabbit
Isotype:	IgG
Clonality:	Polyclonal
Immunogen:	The antiserum was produced against synthesized peptide derived from Internal of human PTGIS.
Formulation:	Phosphate buffered saline (without Mg ²⁺ and Ca ²⁺), pH 7.4, 150mM NaCl, 0.02% sodium azide and 50% glycerol.
Concentration:	lot specific
Purification:	The antibody was affinity-purified from rabbit antiserum by affinity-chromatography using epitope-specific immunogen.
Conjugation:	Unconjugated
Storage:	Store at -20°C as received.
Stability:	Stable for 12 months from date of receipt.
Gene Name:	prostaglandin I2 (prostacyclin) synthase
Database Link:	NP_000952 Entrez Gene 19223 Mouse Entrez Gene 25527 Rat Entrez Gene 5740 Human Q16647
Synonyms:	CYP8; CYP8A1; PGIS; PTGI
Note:	PTGIS antibody detects endogenous levels of total PTGIS protein.
Protein Families:	Druggable Genome, P450, Transmembrane
Protein Pathways:	Arachidonic acid metabolism, Metabolic pathways



[View online »](#)

Product images:



Western blot analysis of extracts from K562 cells, using PTGIS antibody. The lane on the right is treated with the synthesized peptide.