

## Product datasheet for **TA314400**

### Prostaglandin D2 Receptor (PTGDR) Rabbit Polyclonal Antibody

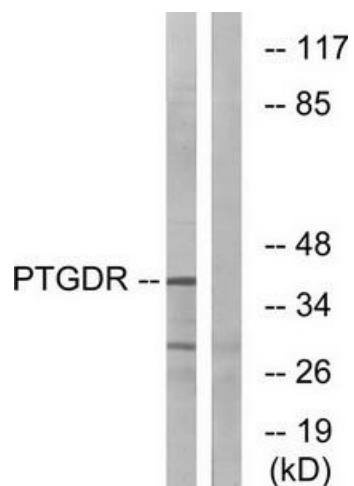
#### Product data:

Product Type:	Primary Antibodies
Applications:	IF, WB
Recommended Dilution:	WB: 1:500~1:3000, IF: 1:100~1:500, ELISA: 1:40000
Reactivity:	Human
Host:	Rabbit
Isotype:	IgG
Clonality:	Polyclonal
Immunogen:	The antiserum was produced against synthesized peptide derived from internal of human PTGDR.
Formulation:	Phosphate buffered saline (without Mg <sup>2+</sup> and Ca <sup>2+</sup> ), pH 7.4, 150mM NaCl, 0.02% sodium azide and 50% glycerol.
Concentration:	lot specific
Purification:	The antibody was affinity-purified from rabbit antiserum by affinity-chromatography using epitope-specific immunogen.
Conjugation:	Unconjugated
Storage:	Store at -20°C as received.
Stability:	Stable for 12 months from date of receipt.
Gene Name:	prostaglandin D2 receptor (DP)
Database Link:	<a href="#">NP_000944</a> <a href="#">Entrez Gene 5729 Human</a> <a href="#">Q13258</a>
Synonyms:	AS1; ASRT1; DP; DP1; PTGDR1
Note:	PTGDR antibody detects endogenous levels of total PTGDR protein.
Protein Families:	Druggable Genome, GPCR, Transmembrane
Protein Pathways:	Neuroactive ligand-receptor interaction

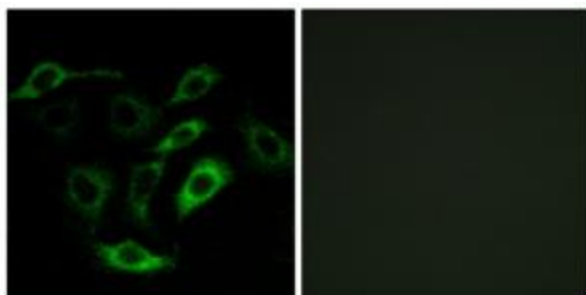


[View online »](#)

## Product images:



Western blot analysis of extracts from HepG2 cells, using PTGDR antibody. The lane on the right is treated with the synthesized peptide.



Immunofluorescence analysis of A549 cells, using PTGDR antibody. The picture on the right is treated with the synthesized peptide.