

Product datasheet for **TA314396**

PSMD11 Rabbit Polyclonal Antibody

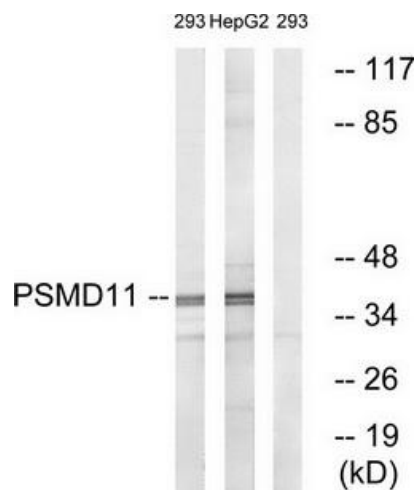
Product data:

Product Type:	Primary Antibodies
Applications:	WB
Recommended Dilution:	WB: 1:500~1:3000, ELISA: 1:10000
Reactivity:	Human, Mouse
Host:	Rabbit
Isotype:	IgG
Clonality:	Polyclonal
Immunogen:	The antiserum was produced against synthesized peptide derived from internal of human PSMD11.
Formulation:	Phosphate buffered saline (without Mg ²⁺ and Ca ²⁺), pH 7.4, 150mM NaCl, 0.02% sodium azide and 50% glycerol.
Concentration:	lot specific
Purification:	The antibody was affinity-purified from rabbit antiserum by affinity-chromatography using epitope-specific immunogen.
Conjugation:	Unconjugated
Storage:	Store at -20°C as received.
Stability:	Stable for 12 months from date of receipt.
Gene Name:	proteasome 26S subunit, non-ATPase 11
Database Link:	NP_002806 Entrez Gene 69077 Mouse Entrez Gene 5717 Human O00231
Synonyms:	p44.5; Rpn6; S9
Note:	PSMD11 antibody detects endogenous levels of total PSMD11 protein.
Protein Families:	Stem cell - Pluripotency
Protein Pathways:	Proteasome



[View online »](#)

Product images:



Western blot analysis of extracts from 293 cells and HepG2 cells, using PSMD11 antibody. The lane on the right is treated with the synthesized peptide.