

## Product datasheet for **TA314393**

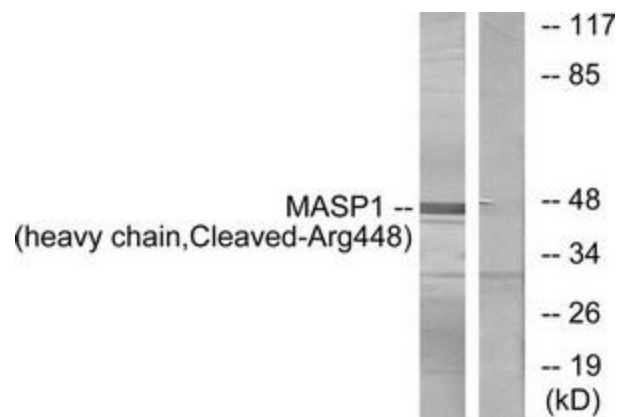
### MASP1 Rabbit Polyclonal Antibody

#### Product data:

Product Type:	Primary Antibodies
Applications:	WB
Recommended Dilution:	WB: 1:500~1:3000, ELISA: 1:10000
Reactivity:	Human
Host:	Rabbit
Isotype:	IgG
Clonality:	Polyclonal
Immunogen:	The antiserum was produced against synthesized peptide derived from human MASP1.
Formulation:	Phosphate buffered saline (without Mg <sup>2+</sup> and Ca <sup>2+</sup> ), pH 7.4, 150mM NaCl, 0.02% sodium azide and 50% glycerol.
Concentration:	lot specific
Purification:	The antibody was affinity-purified from rabbit antiserum by affinity-chromatography using epitope-specific immunogen.
Conjugation:	Unconjugated
Storage:	Store at -20°C as received.
Stability:	Stable for 12 months from date of receipt.
Gene Name:	mannan binding lectin serine peptidase 1
Database Link:	<a href="#">NP_001027019</a> <a href="#">Entrez Gene 5648 Human P48740</a>
Synonyms:	3MC1; CRARF; CRARF1; MAP1; MAP44; MASP; MASP3; PRSS5; RaRF
Note:	MASP1 (heavy chain, Cleaved-Arg448) antibody detects endogenous levels of fragment of activated MASP1 resulting from cleavage adjacent to Arg448.
Protein Families:	Druggable Genome, Protease
Protein Pathways:	Complement and coagulation cascades



[View online »](#)

**Product images:**

Western blot analysis of extracts from A549 cells, treated with etoposide (25uM, 24hours), using MASP1 (heavy chain, Cleaved-Arg448) antibody. The lane on the right is treated with the synthesized peptide.