

Product datasheet for **TA314391**

CGK2 (PRKG2) Rabbit Polyclonal Antibody

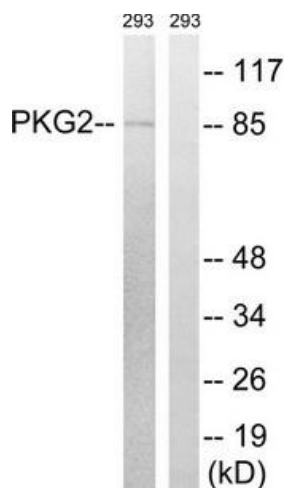
Product data:

| | |
|-----------------------|---|
| Product Type: | Primary Antibodies |
| Applications: | WB |
| Recommended Dilution: | WB: 1:500~1:3000, ELISA: 1:40000 |
| Reactivity: | Human, Mouse, Rat |
| Host: | Rabbit |
| Isotype: | IgG |
| Clonality: | Polyclonal |
| Immunogen: | The antiserum was produced against synthesized non-phosphopeptide derived from human PKG2 around the phosphorylation site of serine 126 (G-V-SP-A-E). |
| Formulation: | Phosphate buffered saline (without Mg ²⁺ and Ca ²⁺), pH 7.4, 150mM NaCl, 0.02% sodium azide and 50% glycerol. |
| Concentration: | lot specific |
| Purification: | The antibody was affinity-purified from rabbit antiserum by affinity-chromatography using epitope-specific immunogen. |
| Conjugation: | Unconjugated |
| Storage: | Store at -20°C as received. |
| Stability: | Stable for 12 months from date of receipt. |
| Gene Name: | protein kinase, cGMP-dependent, type II |
| Database Link: | NP_006250 Entrez Gene 19092 MouseEntrez Gene 25523 RatEntrez Gene 5593 Human Q13237 |
| Synonyms: | cGK2; cGKII; PRKGR2 |
| Note: | PKG2 (Ab-126) antibody detects endogenous levels of total PKG2 protein. |
| Protein Families: | Druggable Genome, Protein Kinase |
| Protein Pathways: | Gap junction, Long-term depression, Olfactory transduction |



[View online »](#)

Product images:



Western blot analysis of extracts from 293 cells, treated with anisomycin (25ug/ml, 30mins), using PKG2 (Ab-126) antibody. The lane on the right is treated with the synthesized peptide.