

Product datasheet for **TA314390**

CGK2 (PRKG2) Rabbit Polyclonal Antibody

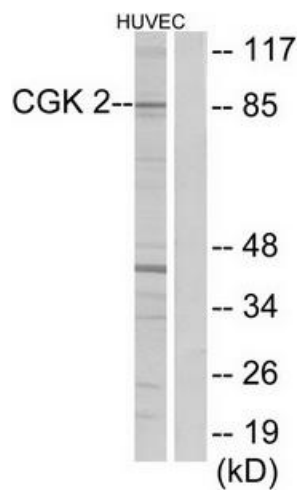
Product data:

Product Type:	Primary Antibodies
Applications:	WB
Recommended Dilution:	WB: 1:500~1:3000, ELISA: 1:20000
Reactivity:	Human, Mouse, Rat
Host:	Rabbit
Isotype:	IgG
Clonality:	Polyclonal
Immunogen:	The antiserum was produced against synthesized peptide derived from internal of human CGK 2.
Formulation:	Phosphate buffered saline (without Mg ²⁺ and Ca ²⁺), pH 7.4, 150mM NaCl, 0.02% sodium azide and 50% glycerol.
Concentration:	lot specific
Purification:	The antibody was affinity-purified from rabbit antiserum by affinity-chromatography using epitope-specific immunogen.
Conjugation:	Unconjugated
Storage:	Store at -20°C as received.
Stability:	Stable for 12 months from date of receipt.
Gene Name:	protein kinase, cGMP-dependent, type II
Database Link:	NP_006250 Entrez Gene 19092 MouseEntrez Gene 25523 RatEntrez Gene 5593 Human Q13237
Synonyms:	cGK2; cGKII; PRKGR2
Note:	CGK 2 antibody detects endogenous levels of total CGK 2 protein.
Protein Families:	Druggable Genome, Protein Kinase
Protein Pathways:	Gap junction, Long-term depression, Olfactory transduction



[View online »](#)

Product images:



Western blot analysis of extracts from HUVEC cells, using CGK 2 antibody. The lane on the right is treated with the synthesized peptide.