

Product datasheet for **TA314385**

Glucosidase 2 subunit beta (PRKCSH) Rabbit Polyclonal Antibody

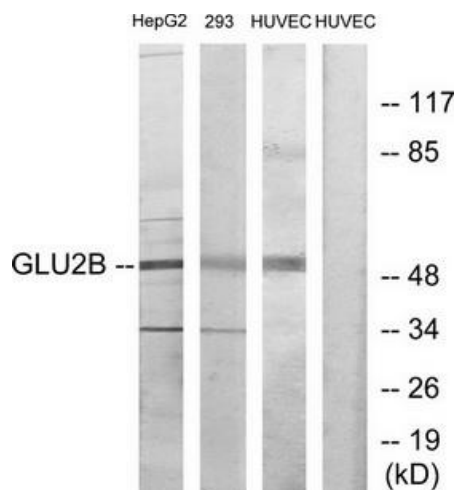
Product data:

Product Type:	Primary Antibodies
Applications:	IF, WB
Recommended Dilution:	WB: 1:500~1:3000, IF: 1:100~1:500, ELISA: 1:10000
Reactivity:	Human, Mouse
Host:	Rabbit
Isotype:	IgG
Clonality:	Polyclonal
Immunogen:	The antiserum was produced against synthesized peptide derived from internal of human GLU2B.
Formulation:	Phosphate buffered saline (without Mg ²⁺ and Ca ²⁺), pH 7.4, 150mM NaCl, 0.02% sodium azide and 50% glycerol.
Concentration:	lot specific
Purification:	The antibody was affinity-purified from rabbit antiserum by affinity-chromatography using epitope-specific immunogen.
Conjugation:	Unconjugated
Storage:	Store at -20°C as received.
Stability:	Stable for 12 months from date of receipt.
Gene Name:	protein kinase C substrate 80K-H
Database Link:	NP_001001329 Entrez Gene 19089 Mouse Entrez Gene 5589 Human P14314
Synonyms:	AGE-R2; G19P1; G1IB; PCLD; PCLD1; PKCSH; PLD1; VASAP-60
Note:	GLU2B antibody detects endogenous levels of total GLU2B protein.
Protein Families:	Druggable Genome

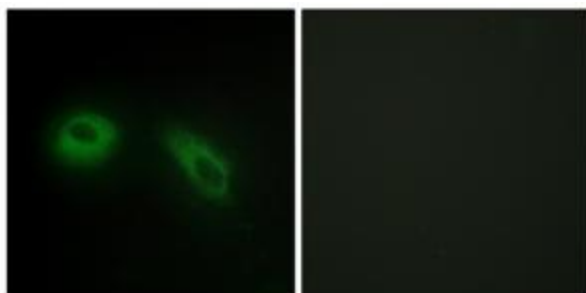


[View online »](#)

Product images:



Western blot analysis of extracts from mouse brain cells, using GLU2B antibody. The lane on the right is treated with the synthesized peptide.



Immunofluorescence analysis of HeLa cells, using GLU2B antibody. The picture on the right is treated with the synthesized peptide.