

Product datasheet for **TA314384**

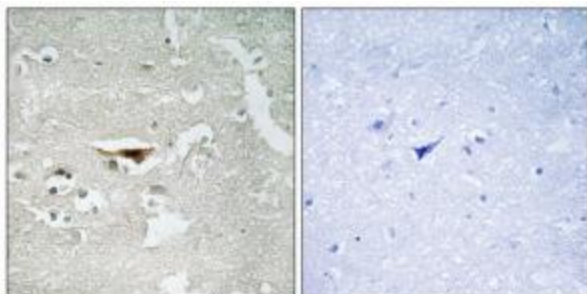
PKIB Rabbit Polyclonal Antibody

Product data:

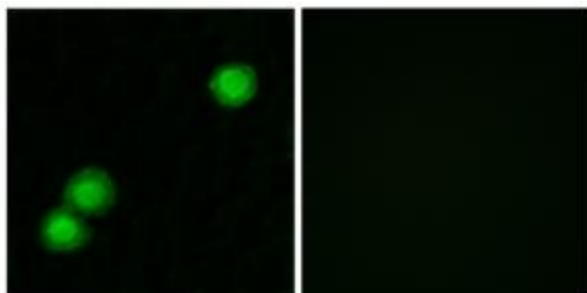
| | |
|-----------------------|---|
| Product Type: | Primary Antibodies |
| Applications: | IF, IHC |
| Recommended Dilution: | IHC: 1:50~1:100, IF: 1:100~1:500, ELISA: 1:1000 |
| Reactivity: | Human, Mouse, Rat |
| Host: | Rabbit |
| Isotype: | IgG |
| Clonality: | Polyclonal |
| Immunogen: | The antiserum was produced against synthesized peptide derived from internal of human IPKB. |
| Formulation: | Phosphate buffered saline (without Mg ²⁺ and Ca ²⁺), pH 7.4, 150mM NaCl, 0.02% sodium azide and 50% glycerol. |
| Concentration: | lot specific |
| Purification: | The antibody was affinity-purified from rabbit antiserum by affinity-chromatography using epitope-specific immunogen. |
| Conjugation: | Unconjugated |
| Storage: | Store at -20°C as received. |
| Stability: | Stable for 12 months from date of receipt. |
| Gene Name: | protein kinase (cAMP-dependent, catalytic) inhibitor beta |
| Database Link: | NP_861460 Entrez Gene 18768 Mouse Entrez Gene 24678 Rat Entrez Gene 5570 Human Q9C010 |
| Synonyms: | PRKACN2 |
| Note: | IPKB antibody detects endogenous levels of total IPKB protein. |
| Protein Families: | Druggable Genome |



[View online »](#)

Product images:

Immunohistochemistry analysis of paraffin-embedded human brain tissue, using IPKB antibody. The picture on the right is treated with the synthesized peptide.



Immunofluorescence analysis of MCF-7 cells, using IPKB antibody. The picture on the right is treated with the synthesized peptide.