

Product datasheet for TA314382

PRKACB Rabbit Polyclonal Antibody

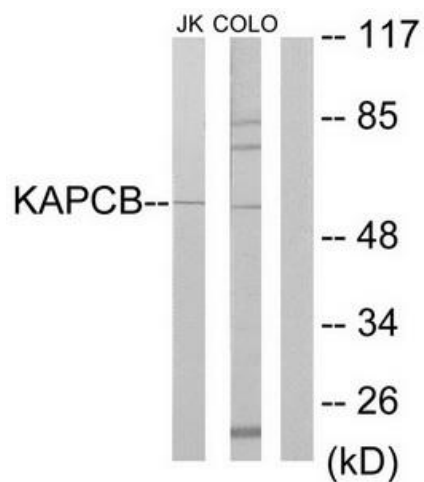
Product data:

Product Type:	Primary Antibodies
Applications:	WB
Recommend Dilution:	WB: 1:500~1:3000, ELISA: 1:20000
Reactivity:	Human, Mouse, Rat
Host:	Rabbit
Isotype:	IgG
Clonality:	Polyclonal
Immunogen:	The antiserum was produced against synthesized peptide derived from internal of human KAPCB.
Formulation:	Phosphate buffered saline (without Mg ²⁺ and Ca ²⁺), pH 7.4, 150mM NaCl, 0.02% sodium azide and 50% glycerol.
Concentration:	lot specific
Purification:	The antibody was affinity-purified from rabbit antiserum by affinity-chromatography using epitope-specific immunogen.
Storage:	Store at -20°C as received.
Stability:	Stable for 12 months from date of receipt.
Gene Name:	protein kinase cAMP-activated catalytic subunit beta
Database Link:	NP_997461 Entrez Gene 18749 Mouse Entrez Gene 293508 Rat Entrez Gene 5567 Human
Synonyms:	PKA C-beta; PKACB
Note:	KAPCB antibody detects endogenous levels of total KAPCB protein.
Protein Families:	Druggable Genome, Protein Kinase
Protein Pathways:	Apoptosis, Calcium signaling pathway, Chemokine signaling pathway, Dilated cardiomyopathy, Gap junction, GnRH signaling pathway, Hedgehog signaling pathway, Insulin signaling pathway, Long-term potentiation, MAPK signaling pathway, Melanogenesis, Olfactory transduction, Oocyte meiosis, Prion diseases, Progesterone-mediated oocyte maturation, Taste transduction, Vascular smooth muscle contraction, Vibrio cholerae infection, Wnt signaling pathway



[View online »](#)

Product images:



Western blot analysis of extracts from Jurkat cells and COLO205 cells, using KAPCB antibody. The lane on the right is treated with the synthesized peptide.