

## Product datasheet for **TA314381**

### PRKACA Rabbit Polyclonal Antibody

#### Product data:

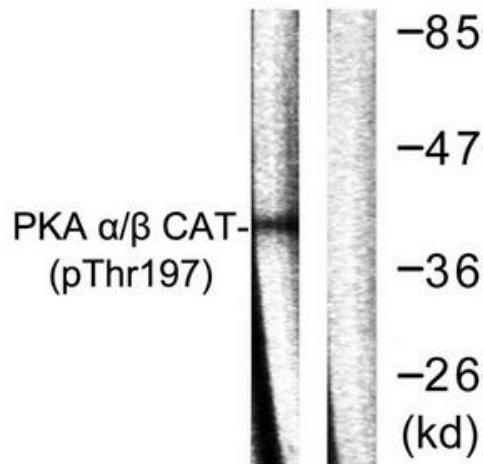
Product Type:	Primary Antibodies
Applications:	IF, IHC, WB
Recommended Dilution:	WB: 1:500~1:3000, IHC: 1:50~1:100, IF: 1:100~1:500, ELISA: 1:10000
Reactivity:	Human, Mouse, Rat
Modifications:	Phospho-specific
Host:	Rabbit
Isotype:	IgG
Clonality:	Polyclonal
Immunogen:	The antiserum was produced against synthesized phosphopeptide derived from human PKA $\alpha/\beta$ CAT around the phosphorylation site of threonine 197 (T-W-TP-L-C).
Formulation:	Phosphate buffered saline (without $Mg^{2+}$ and $Ca^{2+}$ ), pH 7.4, 150mM NaCl, 0.02% sodium azide and 50% glycerol.
Concentration:	lot specific
Purification:	The antibody was affinity-purified from rabbit antiserum by affinity-chromatography using epitope-specific immunogen.
Conjugation:	Unconjugated
Storage:	Store at $-20^{\circ}C$ as received.
Stability:	Stable for 12 months from date of receipt.
Gene Name:	protein kinase cAMP-activated catalytic subunit alpha
Database Link:	<a href="#">NP_002721</a> <a href="#">Entrez Gene 18747 Mouse</a> <a href="#">Entrez Gene 25636 Rat</a> <a href="#">Entrez Gene 5566 Human</a> <a href="#">P17612</a>
Synonyms:	PKACA; PPNAD4
Note:	PKA $\beta$ . CAT (Phospho-Thr197) antibody detects endogenous levels of PKA $\beta$ . CAT only when phosphorylated at threonine 197.
Protein Families:	Druggable Genome, Protein Kinase



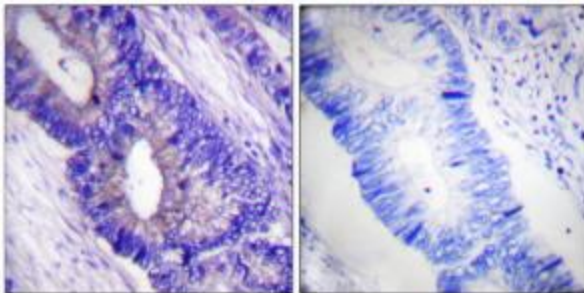
[View online »](#)

**Protein Pathways:**

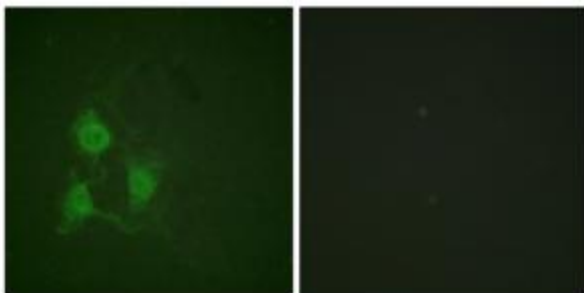
Apoptosis, Calcium signaling pathway, Chemokine signaling pathway, Dilated cardiomyopathy, Gap junction, GnRH signaling pathway, Hedgehog signaling pathway, Insulin signaling pathway, Long-term potentiation, MAPK signaling pathway, Melanogenesis, Olfactory transduction, Oocyte meiosis, Prion diseases, Progesterone-mediated oocyte maturation, Taste transduction, Vascular smooth muscle contraction, Vibrio cholerae infection, Wnt signaling pathway

**Product images:**


Western blot analysis of extracts from mouse brain cells, using PKA  $\alpha/\beta$  CAT (Phospho-Thr197) antibody. The lane on the right is treated with the synthesized peptide.



Immunohistochemistry analysis of paraffin-embedded human colon carcinoma tissue using PKA  $\alpha/\beta$  CAT (Phospho-Thr197) antibody. The picture on the right is treated with the synthesized peptide.



Immunofluorescence analysis of A549 cells, using PKA  $\alpha/\beta$  CAT (Phospho-Thr197) antibody. The picture on the right is treated with the synthesized peptide.