

## Product datasheet for **TA314380**

### PRKACA Rabbit Polyclonal Antibody

#### Product data:

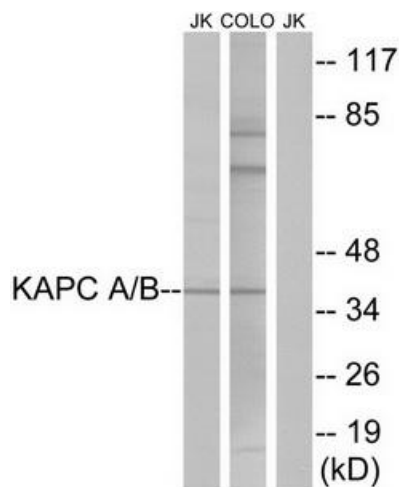
Product Type:	Primary Antibodies
Applications:	WB
Recommended Dilution:	WB: 1:500~1:3000, ELISA: 1:20000
Reactivity:	Human, Mouse, Rat
Host:	Rabbit
Isotype:	IgG
Clonality:	Polyclonal
Immunogen:	The antiserum was produced against synthesized peptide derived from N-terminal of human KAPC A/B.
Formulation:	Phosphate buffered saline (without Mg <sup>2+</sup> and Ca <sup>2+</sup> ), pH 7.4, 150mM NaCl, 0.02% sodium azide and 50% glycerol.
Concentration:	lot specific
Purification:	The antibody was affinity-purified from rabbit antiserum by affinity-chromatography using epitope-specific immunogen.
Conjugation:	Unconjugated
Storage:	Store at -20°C as received.
Stability:	Stable for 12 months from date of receipt.
Gene Name:	protein kinase cAMP-activated catalytic subunit alpha
Database Link:	<a href="#">NP_002721</a> <a href="#">Entrez Gene 18747 Mouse</a> <a href="#">Entrez Gene 25636 Rat</a> <a href="#">Entrez Gene 5566 Human</a> <a href="#">P17612</a>
Synonyms:	PKACA; PPNAD4
Note:	KAPC A/B antibody detects endogenous levels of total KAPC A/B protein.
Protein Families:	Druggable Genome, Protein Kinase



[View online »](#)

**Protein Pathways:**

Apoptosis, Calcium signaling pathway, Chemokine signaling pathway, Dilated cardiomyopathy, Gap junction, GnRH signaling pathway, Hedgehog signaling pathway, Insulin signaling pathway, Long-term potentiation, MAPK signaling pathway, Melanogenesis, Olfactory transduction, Oocyte meiosis, Prion diseases, Progesterone-mediated oocyte maturation, Taste transduction, Vascular smooth muscle contraction, Vibrio cholerae infection, Wnt signaling pathway

**Product images:**


Western blot analysis of extracts from Jurkat cells and COLO cells, using KAPC A/B antibody. The lane on the right is treated with the synthesized peptide.