

Product datasheet for **TA314377**

PPP2R5A Rabbit Polyclonal Antibody

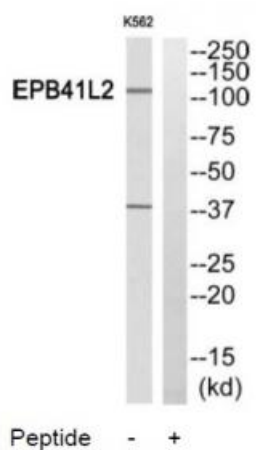
Product data:

Product Type:	Primary Antibodies
Applications:	WB
Recommended Dilution:	WB: 1:500~1:3000, ELISA: 1:5000
Reactivity:	Human, Mouse, Rat
Host:	Rabbit
Isotype:	IgG
Clonality:	Polyclonal
Immunogen:	The antiserum was produced against synthesized peptide derived from internal of human PPP2R5A.
Formulation:	Phosphate buffered saline (without Mg ²⁺ and Ca ²⁺), pH 7.4, 150mM NaCl, 0.02% sodium azide and 50% glycerol.
Concentration:	lot specific
Purification:	The antibody was affinity-purified from rabbit antiserum by affinity-chromatography using epitope-specific immunogen.
Conjugation:	Unconjugated
Storage:	Store at -20°C as received.
Stability:	Stable for 12 months from date of receipt.
Gene Name:	protein phosphatase 2 regulatory subunit B'alpha
Database Link:	NP_006234 Entrez Gene 226849 MouseEntrez Gene 312754 RatEntrez Gene 5525 Human Q15172
Synonyms:	B56A; PR61A
Note:	PPP2R5A antibody detects endogenous levels of total PPP2R5A protein.
Protein Families:	Druggable Genome, Phosphatase
Protein Pathways:	Oocyte meiosis, Wnt signaling pathway



[View online »](#)

Product images:



Western blot analysis of extracts from HuvEc cells and HeLa cells, using PPP2R5A antibody. The lane on the right is treated with the synthesized peptide.