

## Product datasheet for **TA314376**

### PPP2R2B Rabbit Polyclonal Antibody

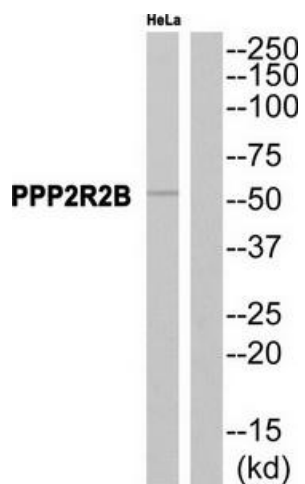
#### Product data:

Product Type:	Primary Antibodies
Applications:	WB
Recommended Dilution:	WB: 1:500~1:3000, ELISA: 1:40000
Reactivity:	Human, Mouse, Rat
Host:	Rabbit
Isotype:	IgG
Clonality:	Polyclonal
Immunogen:	The antiserum was produced against synthesized peptide derived from internal of human PPP2R2B.
Formulation:	Phosphate buffered saline (without Mg <sup>2+</sup> and Ca <sup>2+</sup> ), pH 7.4, 150mM NaCl, 0.02% sodium azide and 50% glycerol.
Concentration:	lot specific
Purification:	The antibody was affinity-purified from rabbit antiserum by affinity-chromatography using epitope-specific immunogen.
Conjugation:	Unconjugated
Storage:	Store at -20°C as received.
Stability:	Stable for 12 months from date of receipt.
Database Link:	<a href="#">NP_001120853</a> <a href="#">Entrez Gene 60660 Rat</a> <a href="#">Entrez Gene 72930 Mouse</a>
Synonyms:	B55BETA; PP2AB55BETA; PP2ABBETA; PP2APR55B; PP2APR55BETA; PR2AB55BETA; PR2ABBETA; PR2APR55BETA; PR52B
Note:	PPP2R2B antibody detects endogenous levels of total PPP2R2B protein.
Protein Families:	Druggable Genome, Phosphatase
Protein Pathways:	Tight junction



[View online »](#)

## Product images:



Western blot analysis of extracts from HeLa cells, using PPP2R2B antibody. The lane on the right is treated with the synthesized peptide.