

## Product datasheet for **TA314375**

### PPP2R1B Rabbit Polyclonal Antibody

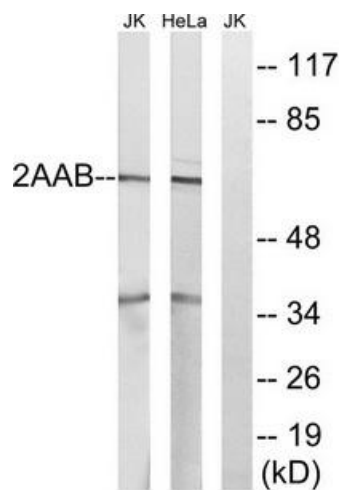
#### Product data:

Product Type:	Primary Antibodies
Applications:	IHC, WB
Recommended Dilution:	WB: 1:500~1:3000, IHC: 1:50~1:100, ELISA: 1:40000
Reactivity:	Human, Mouse, Rat
Host:	Rabbit
Isotype:	IgG
Clonality:	Polyclonal
Immunogen:	The antiserum was produced against synthesized peptide derived from internal of human PPP2R1B.
Formulation:	Phosphate buffered saline (without Mg <sup>2+</sup> and Ca <sup>2+</sup> ), pH 7.4, 150mM NaCl, 0.02% sodium azide and 50% glycerol.
Concentration:	lot specific
Purification:	The antibody was affinity-purified from rabbit antiserum by affinity-chromatography using epitope-specific immunogen.
Conjugation:	Unconjugated
Storage:	Store at -20°C as received.
Stability:	Stable for 12 months from date of receipt.
Gene Name:	protein phosphatase 2 scaffold subunit Abeta
Database Link:	<a href="#">NP_001171033</a> <a href="#">Entrez Gene 73699 Mouse</a> <a href="#">Entrez Gene 315648 Rat</a> <a href="#">Entrez Gene 5519 Human</a> <a href="#">P30154</a>
Synonyms:	PP2A-Abeta; PR65B
Note:	PPP2R1B antibody detects endogenous levels of total PPP2R1B protein.
Protein Families:	Druggable Genome, Phosphatase, Transcription Factors
Protein Pathways:	Long-term depression, Oocyte meiosis, TGF-beta signaling pathway, Tight junction, Wnt signaling pathway

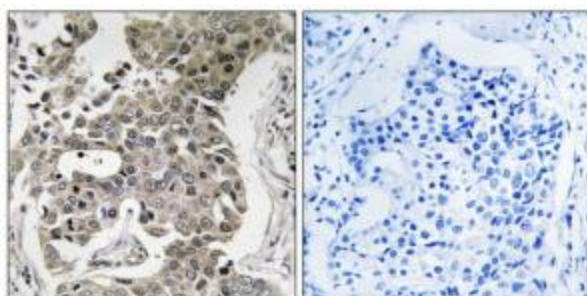


[View online »](#)

## Product images:



Western blot analysis of extracts from Jurkat cells and HeLa cells, using PPP2R1B antibody. The lane on the right is treated with the synthesized peptide.



Immunohistochemistry analysis of paraffin-embedded human breast carcinoma tissue using PPP2R1B antibody. The picture on the right is treated with the synthesized peptide.