

Product datasheet for **TA314374**

NIPP1 (PPP1R8) Rabbit Polyclonal Antibody

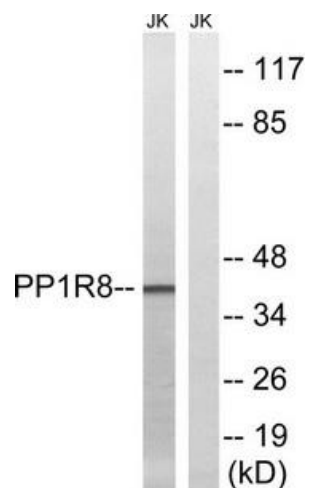
Product data:

Product Type:	Primary Antibodies
Applications:	WB
Recommended Dilution:	WB: 1:500~1:3000, ELISA: 1:20000
Reactivity:	Human, Mouse, Rat
Host:	Rabbit
Isotype:	IgG
Clonality:	Polyclonal
Immunogen:	The antiserum was produced against synthesized peptide derived from internal of human PPP1R8.
Formulation:	Phosphate buffered saline (without Mg ²⁺ and Ca ²⁺), pH 7.4, 150mM NaCl, 0.02% sodium azide and 50% glycerol.
Concentration:	lot specific
Purification:	The antibody was affinity-purified from rabbit antiserum by affinity-chromatography using epitope-specific immunogen.
Conjugation:	Unconjugated
Storage:	Store at -20°C as received.
Stability:	Stable for 12 months from date of receipt.
Gene Name:	protein phosphatase 1 regulatory subunit 8
Database Link:	NP_002704 Entrez Gene 100336 MouseEntrez Gene 313030 RatEntrez Gene 5511 Human Q12972
Synonyms:	ARD-1; ARD1; NIPP-1; NIPP1; PRO2047
Note:	PPP1R8 antibody detects endogenous levels of total PPP1R8 protein.
Protein Families:	Druggable Genome, Transcription Factors



[View online »](#)

Product images:



Western blot analysis of extracts from Jurkat cells, using PPP1R8 antibody. The lane on the right is treated with the synthesized peptide.