

Product datasheet for **TA314373**

PPP1R3C Rabbit Polyclonal Antibody

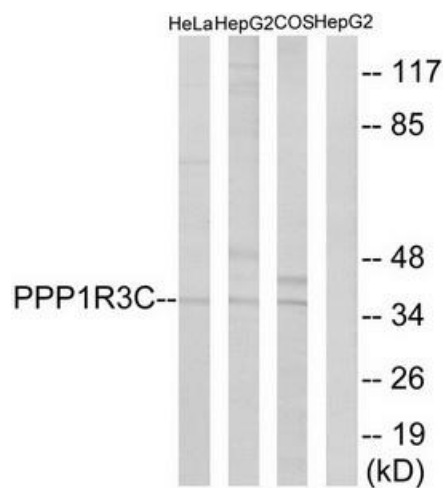
Product data:

Product Type:	Primary Antibodies
Applications:	WB
Recommended Dilution:	WB: 1:500~1:3000, ELISA: 1:20000
Reactivity:	Human
Host:	Rabbit
Isotype:	IgG
Clonality:	Polyclonal
Immunogen:	The antiserum was produced against synthesized peptide derived from internal of human PPP1R3C.
Formulation:	Phosphate buffered saline (without Mg ²⁺ and Ca ²⁺), pH 7.4, 150mM NaCl, 0.02% sodium azide and 50% glycerol.
Concentration:	lot specific
Purification:	The antibody was affinity-purified from rabbit antiserum by affinity-chromatography using epitope-specific immunogen.
Conjugation:	Unconjugated
Storage:	Store at -20°C as received.
Stability:	Stable for 12 months from date of receipt.
Gene Name:	protein phosphatase 1 regulatory subunit 3C
Database Link:	NP_005389 Entrez Gene 5507 Human Q9UQK1
Synonyms:	PPP1R5
Note:	PPP1R3C antibody detects endogenous levels of total PPP1R3C protein.
Protein Families:	Druggable Genome
Protein Pathways:	Insulin signaling pathway



[View online »](#)

Product images:



Western blot analysis of extracts from HeLa cells, HepG2 cells and COS-7 cells, using PPP1R3C antibody. The lane on the right is treated with the synthesized peptide.