

Product datasheet for **TA314369**

IPP 2 (PPP1R2) Rabbit Polyclonal Antibody

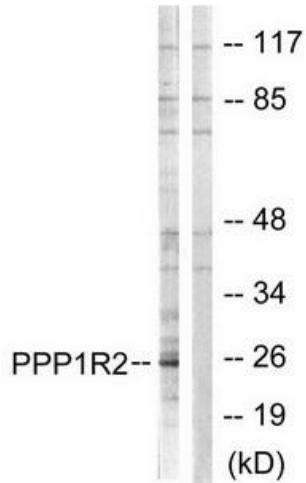
Product data:

Product Type:	Primary Antibodies
Applications:	IHC, WB
Recommended Dilution:	Human, Mouse, Rat
Reactivity:	Human, Mouse, Rat
Host:	Rabbit
Isotype:	IgG
Clonality:	Polyclonal
Immunogen:	The antiserum was produced against synthesized non-phosphopeptide derived from human PPP1R2 around the phosphorylation site of serine 120 and serine 121 (Q-E-SP-SP-G-E)
Formulation:	Phosphate buffered saline (without Mg ²⁺ and Ca ²⁺), pH 7.4, 150mM NaCl, 0.02% sodium azide and 50% glycerol.
Concentration:	lot specific
Purification:	The antibody was affinity-purified from rabbit antiserum by affinity-chromatography using epitope-specific immunogen.
Conjugation:	Unconjugated
Storage:	Store at -20°C as received.
Stability:	Stable for 12 months from date of receipt.
Gene Name:	protein phosphatase 1 regulatory inhibitor subunit 2
Database Link:	NP_006232 Entrez Gene 66849 MouseEntrez Gene 192361 RatEntrez Gene 5504 Human P41236
Synonyms:	IPP-2; IPP2
Note:	PPP1R2 (Ab-120/121) antibody detects endogenous levels of total PPP1R2 protein
Protein Families:	Druggable Genome

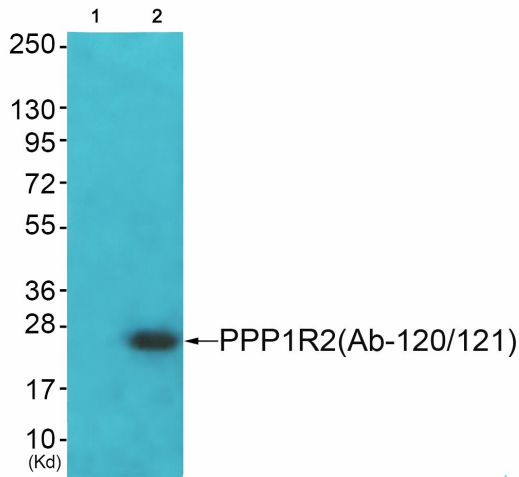


[View online »](#)

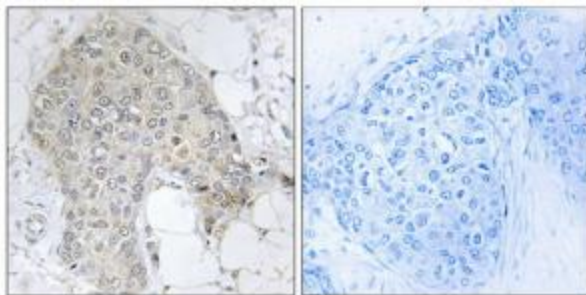
Product images:



Western blot analysis of extracts from Jurkat cells, using PPP1R2 (Ab-120/121) antibody. The lane on the right is treated with the synthesized peptide.



Western blot analysis of extracts from JK cells (Lane 2), using PPP1R2 (Ab-120/121) Antibody. The lane on the left is treated with synthesized peptide.



Immunohistochemistry analysis of paraffin-embedded human breast carcinoma tissue using PPP1R2 (Ab-120/121) antibody. The picture on the right is treated with the synthesized peptide.