

## Product datasheet for **TA314368**

### IPP 2 (PPP1R2) Rabbit Polyclonal Antibody

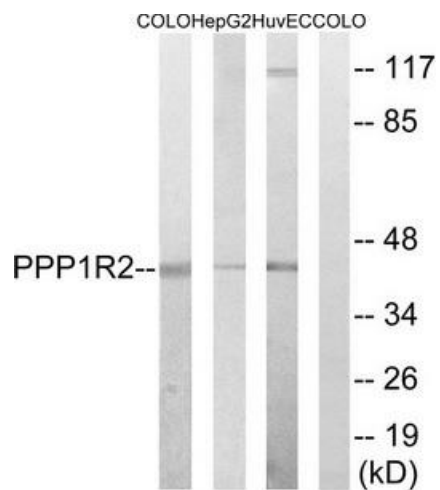
#### Product data:

Product Type:	Primary Antibodies
Applications:	WB
Recommended Dilution:	WB: 1:500~1:3000, ELISA: 1:40000
Reactivity:	Human, Mouse, Rat
Host:	Rabbit
Isotype:	IgG
Clonality:	Polyclonal
Immunogen:	The antiserum was produced against synthesized peptide derived from Internal of human PPP1R2.
Formulation:	Phosphate buffered saline (without Mg <sup>2+</sup> and Ca <sup>2+</sup> ), pH 7.4, 150mM NaCl, 0.02% sodium azide and 50% glycerol.
Concentration:	lot specific
Purification:	The antibody was affinity-purified from rabbit antiserum by affinity-chromatography using epitope-specific immunogen.
Conjugation:	Unconjugated
Storage:	Store at -20°C as received.
Stability:	Stable for 12 months from date of receipt.
Gene Name:	protein phosphatase 1 regulatory inhibitor subunit 2
Database Link:	<a href="#">NP_006232</a> <a href="#">Entrez Gene 66849 MouseEntrez Gene 192361 RatEntrez Gene 5504 Human P41236</a>
Synonyms:	IPP-2; IPP2
Note:	PPP1R2 (Ab-44) antibody detects endogenous levels of total PPP1R2 protein.
Protein Families:	Druggable Genome



[View online »](#)

## Product images:



Western blot analysis of extracts from COLO cells, HepG2 cells and HUVEC cells, using PPP1R2 (Ab-44) antibody. The lane on the right is treated with the synthesized peptide.