

Product datasheet for **TA314367**

CTSA Rabbit Polyclonal Antibody

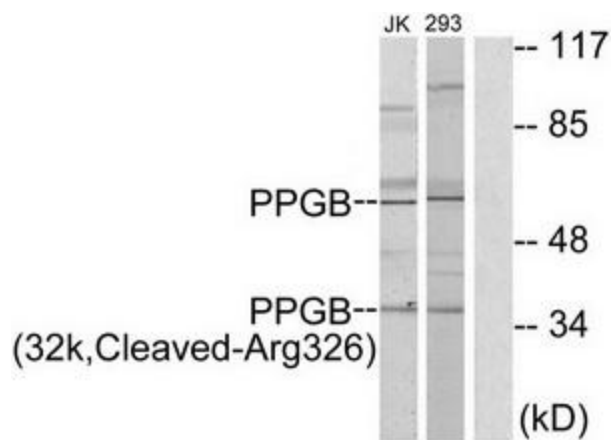
Product data:

Product Type:	Primary Antibodies
Applications:	WB
Recommended Dilution:	WB: 1:500~1:3000, ELISA: 1:10000
Reactivity:	Human, Mouse
Host:	Rabbit
Isotype:	IgG
Clonality:	Polyclonal
Immunogen:	The antiserum was produced against synthesized peptide derived from human PPGB
Formulation:	Phosphate buffered saline (without Mg ²⁺ and Ca ²⁺), pH 7.4, 150mM NaCl, 0.02% sodium azide and 50% glycerol.
Concentration:	lot specific
Purification:	The antibody was affinity-purified from rabbit antiserum by affinity-chromatography using epitope-specific immunogen.
Conjugation:	Unconjugated
Storage:	Store at -20°C as received.
Stability:	Stable for 12 months from date of receipt.
Gene Name:	cathepsin A
Database Link:	NP_000299 Entrez Gene 19025 Mouse Entrez Gene 5476 Human P10619
Synonyms:	GLB2; GSL; NGBE; PPCA; PPGB
Note:	PPGB (32k, Cleaved-Arg326) antibody detects endogenous levels of fragment of activated PPGB resulting from cleavage adjacent to Arg326.
Protein Families:	Druggable Genome, Protease
Protein Pathways:	Renin-angiotensin system



[View online »](#)

Product images:



Western blot analysis of extracts from Jurkat cells and 293 cells, treated with etoposide (25uM, 1 hour), using PPGB (32k, Cleaved-Arg326) antibody. The lane on the right is treated with the synthesized peptide.