

Product datasheet for **TA314366**

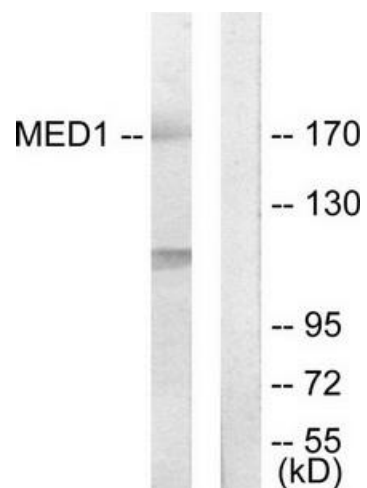
MED1 Rabbit Polyclonal Antibody

Product data:

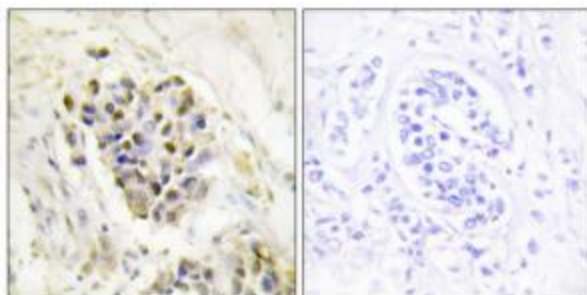
Product Type:	Primary Antibodies
Applications:	IHC, WB
Recommended Dilution:	WB: 1:500~1:3000, IHC: 1:50~1:100, ELISA: 1:10000
Reactivity:	Human, Mouse
Host:	Rabbit
Isotype:	IgG
Clonality:	Polyclonal
Immunogen:	The antiserum was produced against synthesized peptide derived from internal of human MED1.
Formulation:	Phosphate buffered saline (without Mg ²⁺ and Ca ²⁺), pH 7.4, 150mM NaCl, 0.02% sodium azide and 50% glycerol.
Concentration:	lot specific
Purification:	The antibody was affinity-purified from rabbit antiserum by affinity-chromatography using epitope-specific immunogen.
Conjugation:	Unconjugated
Storage:	Store at -20°C as received.
Stability:	Stable for 12 months from date of receipt.
Gene Name:	mediator complex subunit 1
Database Link:	NP_004765 Entrez Gene 19014 Mouse Entrez Gene 5469 Human Q15648
Synonyms:	CRSP1; CRSP200; DRIP205; DRIP230; PBP; PPARBP; PPARGBP; RB18A; TRAP220; TRIP2
Note:	MED1 antibody detects endogenous levels of total MED1 protein.
Protein Families:	Druggable Genome, Nuclear Hormone Receptor, Transcription Factors



[View online »](#)

Product images:

Western blot analysis of extracts from Jurkat cells, using MED1 antibody. The lane on the right is treated with the synthesized peptide.



Immunohistochemistry analysis of paraffin-embedded human breast carcinoma tissue using MED1 antibody. The picture on the right is treated with the synthesized peptide.