

## Product datasheet for **TA314361**

### Oct-1 (POU2F1) Rabbit Polyclonal Antibody

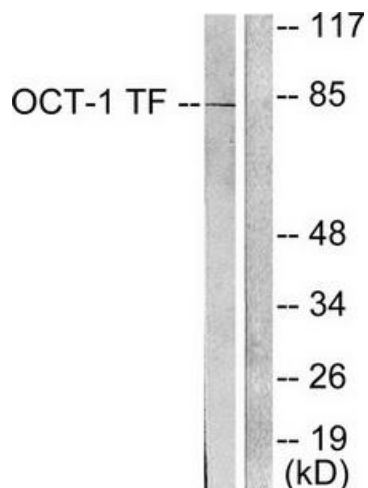
#### Product data:

Product Type:	Primary Antibodies
Applications:	IHC, WB
Recommended Dilution:	WB: 1:500~1:3000, IHC: 1:50~1:100, ELISA: 1:5000
Reactivity:	Human, Mouse, Rat
Host:	Rabbit
Isotype:	IgG
Clonality:	Polyclonal
Immunogen:	The antiserum was produced against synthesized peptide derived from human OCT-1.
Formulation:	Phosphate buffered saline (without Mg <sup>2+</sup> and Ca <sup>2+</sup> ), pH 7.4, 150mM NaCl, 0.02% sodium azide and 50% glycerol.
Concentration:	lot specific
Purification:	The antibody was affinity-purified from rabbit antiserum by affinity-chromatography using epitope-specific immunogen.
Conjugation:	Unconjugated
Storage:	Store at -20°C as received.
Stability:	Stable for 12 months from date of receipt.
Gene Name:	POU class 2 homeobox 1
Database Link:	<a href="#">NP_001185712</a> <a href="#">Entrez Gene 18986 Mouse</a> <a href="#">Entrez Gene 171068 Rat</a> <a href="#">Entrez Gene 5451 Human</a> <a href="#">P14859</a>
Synonyms:	oct-1B; OCT1; OTF1
Note:	OCT-1 antibody detects endogenous levels of total OCT-1 protein.
Protein Families:	Druggable Genome, Transcription Factors

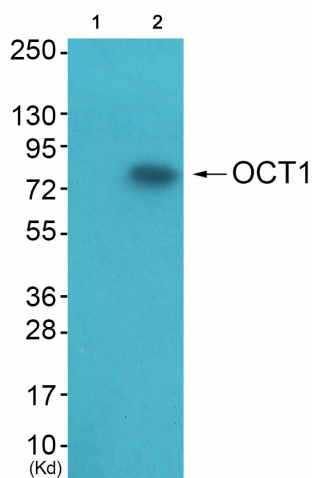


[View online »](#)

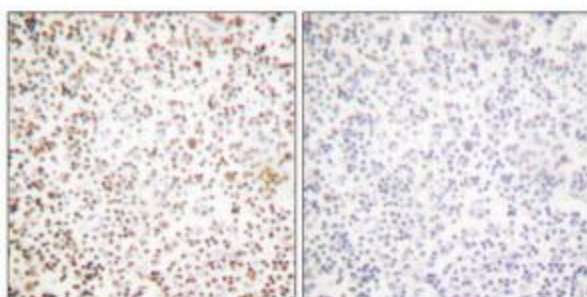
Product images:



Western blot analysis of extracts from HeLa cells, using OCT-1 antibody (#TA314361). The lane on the right is treated with the synthesized peptide.



Western blot analysis of extracts from A549 cells (Lane 2), using OCT1 Antibody. The lane on the left is treated with synthesized peptide.



Immunohistochemical analysis of paraffin-embedded human lymph node tissue using OCT-1 antibody (#TA314361). The picture on the right is treated with the synthesized peptide.