

## Product datasheet for **TA314358**

### DNA polymerase alpha (POLA1) Rabbit Polyclonal Antibody

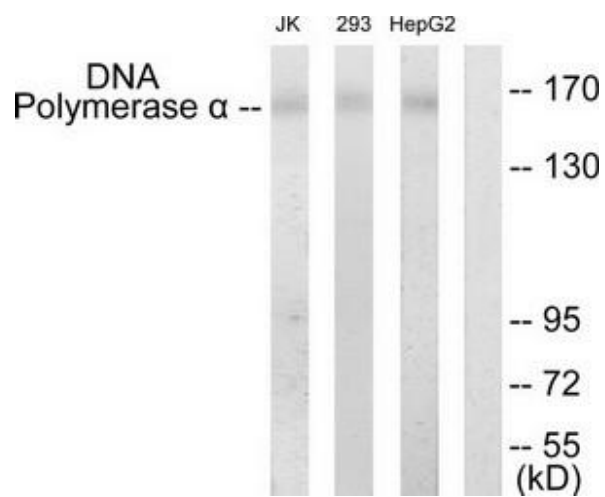
#### Product data:

Product Type:	Primary Antibodies
Applications:	WB
Recommended Dilution:	WB: 1:500~1:3000, ELISA: 1:20000
Reactivity:	Human
Host:	Rabbit
Isotype:	IgG
Clonality:	Polyclonal
Immunogen:	The antiserum was produced against synthesized peptide derived from N-terminal of human DNA Polymerase $\alpha$ .
Formulation:	Phosphate buffered saline (without $Mg^{2+}$ and $Ca^{2+}$ ), pH 7.4, 150mM NaCl, 0.02% sodium azide and 50% glycerol.
Concentration:	lot specific
Purification:	The antibody was affinity-purified from rabbit antiserum by affinity-chromatography using epitope-specific immunogen.
Conjugation:	Unconjugated
Storage:	Store at $-20^{\circ}C$ as received.
Stability:	Stable for 12 months from date of receipt.
Gene Name:	polymerase (DNA) alpha 1, catalytic subunit
Database Link:	<a href="#">NP_058633</a> <a href="#">Entrez Gene 5422 Human P09884</a>
Synonyms:	NSX; p180; POLA
Note:	DNA Polymerase . antibody detects endogenous levels of total DNA Polymerase . protein.
Protein Families:	Druggable Genome
Protein Pathways:	DNA replication, Metabolic pathways, Purine metabolism, Pyrimidine metabolism



[View online »](#)

## Product images:



Western blot analysis of extracts from Jurkat cells, 293 cells and HepG2 cells, using DNA Polymerase a antibody. The lane on the right is treated with the synthesized peptide.