

Product datasheet for **TA314351**

Plasminogen (PLG) Rabbit Polyclonal Antibody

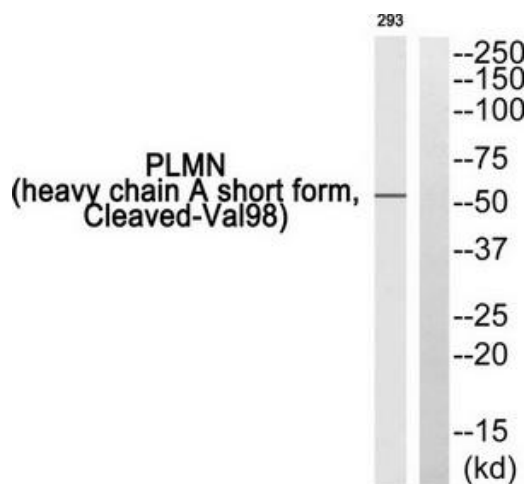
Product data:

Product Type:	Primary Antibodies
Applications:	WB
Recommended Dilution:	WB: 1:500~1:3000, ELISA: 1:1000
Reactivity:	Human, Mouse, Rat
Host:	Rabbit
Isotype:	IgG
Clonality:	Polyclonal
Immunogen:	The antiserum was produced against synthesized peptide derived from human PLMN.
Formulation:	Phosphate buffered saline (without Mg ²⁺ and Ca ²⁺), pH 7.4, 150mM NaCl, 0.02% sodium azide and 50% glycerol.
Concentration:	lot specific
Purification:	The antibody was affinity-purified from rabbit antiserum by affinity-chromatography using epitope-specific immunogen.
Conjugation:	Unconjugated
Storage:	Store at -20°C as received.
Stability:	Stable for 12 months from date of receipt.
Gene Name:	plasminogen
Database Link:	NP_000292 Entrez Gene 18815 Mouse Entrez Gene 85253 Rat Entrez Gene 5340 Human P00747
Synonyms:	DKFZp779M0222
Note:	PLMN (heavy chain A short form, Cleaved-Val98) antibody detects endogenous levels of fragment of activated PLMN resulting from cleavage adjacent to Val98.
Protein Families:	Druggable Genome, Protease, Secreted Protein
Protein Pathways:	Complement and coagulation cascades, Neuroactive ligand-receptor interaction



[View online »](#)

Product images:



Western blot analysis of extracts from 293 cells, using PLMN (heavy chain A short form, Cleaved-Val98) antibody. The lane on the right is treated with the synthesized peptide.