

Product datasheet for **TA314350**

Phospholipase D2 (PLD2) Rabbit Polyclonal Antibody

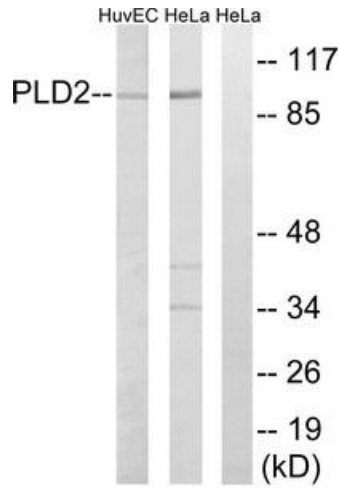
Product data:

Product Type:	Primary Antibodies
Applications:	WB
Recommended Dilution:	WB: 1:500~1:3000, ELISA: 1:10000
Reactivity:	Human, Mouse, Rat
Host:	Rabbit
Isotype:	IgG
Clonality:	Polyclonal
Immunogen:	The antiserum was produced against synthesized peptide derived from Internal of human PLD2.
Formulation:	Phosphate buffered saline (without Mg ²⁺ and Ca ²⁺), pH 7.4, 150mM NaCl, 0.02% sodium azide and 50% glycerol.
Concentration:	lot specific
Purification:	The antibody was affinity-purified from rabbit antiserum by affinity-chromatography using epitope-specific immunogen.
Conjugation:	Unconjugated
Storage:	Store at -20°C as received.
Stability:	Stable for 12 months from date of receipt.
Gene Name:	phospholipase D2
Database Link:	NP_002654 Entrez Gene 18806 Mouse Entrez Gene 25097 Rat Entrez Gene 5338 Human O14939
Synonyms:	choline phosphatase 2; phospholipase D2
Note:	PLD2 (Ab-169) Antibody detects endogenous levels of total PLD2 protein.
Protein Families:	Druggable Genome
Protein Pathways:	Endocytosis, Ether lipid metabolism, Fc gamma R-mediated phagocytosis, Glycerophospholipid metabolism, GnRH signaling pathway, Metabolic pathways

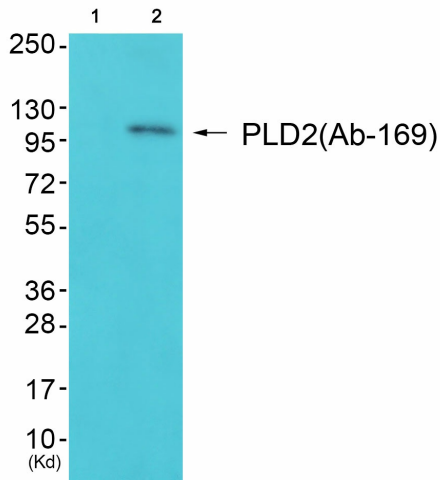


[View online »](#)

Product images:



Western blot analysis of extracts from HeLa/HUVEC cells, using PLD2 (Ab-169) Antibody. The lane on the right is treated with the synthesized peptide.



Western blot analysis of extracts from JK cells (Lane 2) and 293 cells (Lane 3), using PLD2 (Ab-169) Antibody. The lane on the left is treated with synthesized pe